



**Pricelist** – Implements

## MOUNTING

- STANDARD MOUNTING – EURO
- MOUNTING FOR MINILOADERS TYPE PLATE – THALER, SCHAFFER KWADRAT, FUCHS –170€
- MOUNTING DO MINILOADERS TYPE HOOKS – WEIDEMANN, GIANT, SCHAFFER SWH – 190€
- MOUNTING FOR TELESCOPIC LOADERS - 260€
- MOUNTING KOMBI FOR EXAMPLE 3-PKT PLUS EURO - 130€

## WORKING WIDTH

- POSSIBILITY TO MAKE EQUIPMENT WITH WIDTH NOT LISTED IN THIS PRICE LIST

## STANDARD VERSION

- BUCKETS – IN STANDARD RIB INSIDE, AS AN OPTION ROUND BOTTOM
- BUCKETS WITH GRIPPER – STANDARD BOLTED SIDES
- BUCKETS WITH GRAB – STANDARD BOLTED SIDES











## CONDITIONS OF DELIVERY

- DELIVERY TIME: 4 – 6 WEEKS
- TRANSPORT COST NOT INCLUDED IN THE PRICE, CALCULATED SEPARATELY IN EACH ORDER

IMPLEMENTS	STANDARD PACKING	AT THE CUSTOMER REQUEST
<b>SNOW PLOWS</b>	LOOSE ON THE TRUCK	50 - 60 € ON THE PALLET BOX
<b>ADAPTERS, PALLET FORKS, BALE GRIPPERS</b>	ON THE PALLET 3-5 PCS IN STACK	EACH ITEM ON THE SEPARATELY PALLET – EXTRA CHARGE 10-20 € PER PALLET DEPEND ON THE SIZE
<b>BUCKETS, FORK WITH GRIPPERS, BUCKET WITH GRIPPERS</b>	LOOSE ON THE TRUCK	10 – 20 € PER PALLET

## AVAILABLE COLORS

- STANDARD PAINTING – RAL 7021

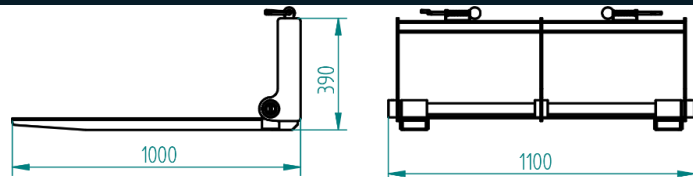
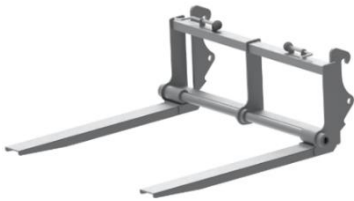
RAL	COLOR	EXAMPLE
1037	YELLOW	
2003	PASTEL ORANGE	
2008	BRIGHT ORANGE	
3000	RED	
5004	BLACK BLUE	
5015	SKY BLUE	
6010	GREEN	
7016	ANTRACITE GRAY	
7021	<b>BLACK GREY</b>	
9005	BLACK	

<b>1.COMPACT EQUIPMENT .....</b>	<b>5</b>
<b>2.EQUIPMENT FOR FRONT LOADER. MINILOADER, TELESKOPIC LOADER.....</b>	<b>7</b>
BUCKET .....	8
HIGH TIP BUCKET .....	12
4IN1 BUCKET.....	13
STONE BUCKET .....	14
POTATO/BEETROOT BUCKET.....	16
MANURE FORK .....	16
FORK WITH GRIPPER .....	18
BUCKET WITH GRIPPER.....	20
BUCKET WITH GRAB .....	23
SILAGE CUTTER.....	24
BALE GRIPPER .....	25
BALE TRANSPORTER .....	27
BALE CUTTER .....	28
BALE UNWINDER .....	28
BALE FORK.....	28
STRAW BALE TRANSPORTER.....	29
HYDRAULIC WOOD SPLITTER .....	30
WOOD GRIPPER .....	30
PALLET FORKS ISO FEM II.....	32
BOX ROTATOR.....	33
TRANSPORT BOX .....	33
TOOL PLATFORM.....	34
LOAD HOOK .....	34
BIGBAG LIFTER.....	34
ADAPTER .....	35
MACHINE LIFTER – TUZ II / III .....	36
FORKLIFT BUCKET .....	36
WELDED ATTACHMENTS .....	36
RUBBER SHIELD .....	37
CLEANING BRUSH .....	38
DIGGING ARM.....	39
EARTHDRILL .....	39
GRADER .....	39
<b>3.BEEDING AND FEEDING MACHINES.....</b>	<b>40</b>
BEDDING BUCKET .....	40

FEEDING BUCKET WITH AUGER – ONE SIDE .....	42
FEEDING BUCKET.....	42
FEED MIXER .....	44
SPECIAL OPTIONS FOR FEEDING BUCKET .....	44
SILAGE CUTTER.....	45
SILLAGE ROLLER / CAMPBELL ROLLER.....	45
FEEDING AUGER .....	46
BALE UNROLLER .....	46
BALE WRAPPER .....	46
<b>4.MUNICIPAL MACHINES .....</b>	<b>47</b>
SNOW PLOW .....	47
ROTARY SNOW PLOW .....	48
SALT / SAND SPREADER .....	49
BROOM WEED MACHINE .....	49
STRIP BROOM.....	50
<b>5.CONCRETE MIXERS.....</b>	<b>50</b>
CONCRETE MIXER.....	50
BETONMIXER .....	51
<b>6.OTHER EQUIPMENT .....</b>	<b>51</b>
RIDING ARENA GRADER PRO .....	51
DISC HARROW .....	51

## PALLET FORKS

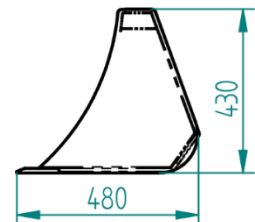
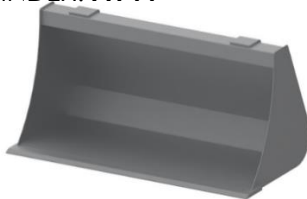
INDEX: **L024**



Nr. Art.	Capacity (kg)	Weight (kg)
<b>L024</b>	400	45

## STANDARD BUCKET MINI

INDEX: **A144**



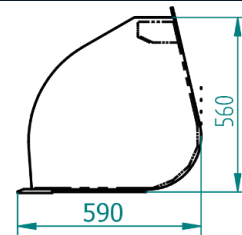
### FEATURES

- **COVER** - 4MM
- **SIDE** - 4MM
- **CUTTING EDGE** - HB500/110X12MM

Nr. Art.	Width (mm)	Weight (kg)	Capacity (m3)
<b>A144.100</b>	1000	60	0,08
<b>A144.120</b>	1200	70	0,10
<b>A144.140</b>	1400	80	0,14

## VOLUME BUCKET MINI

INDEX: **A143**



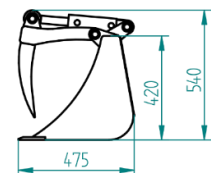
### FEATURES

- **COVER** - 4MM
- **SIDE** - 4MM
- **CUTTING EDGE** - HB500/110X12MM

Nr. Art.	Width (mm)	Weight (kg)	Capacity (m3)
<b>A143.100</b>	1000	76	0,22
<b>A143.120</b>	1200	91	0,26
<b>A143.140</b>	1400	107	0,31
<b>A143.160</b>	1600	123	0,35

## BUCKET WITH GRIPPER MINI

INDEX: **A518**



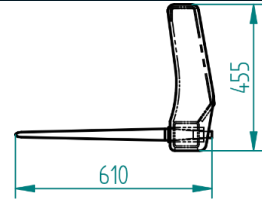
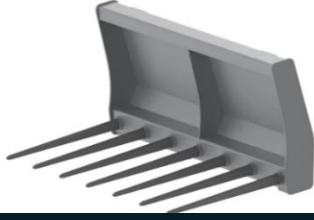
### FEATURES

- **COVER** - 4MM
- **SIDE** - 4MM
- **CUTTING EDGE** - HB500/110X12MM

Nr. Art.	Width (mm)	Weight (kg)	Teeth (pieces)
<b>A518.100</b>	1000	75	<b>5</b>
<b>A518.120</b>	1200	90	<b>6</b>
<b>A518.140</b>	1400	105	<b>7</b>
<b>A518.160</b>	1600	120	<b>8</b>
<b>A518.180</b>	1800	135	<b>9</b>

## MANURE FORK MINI

INDEX: **B109**



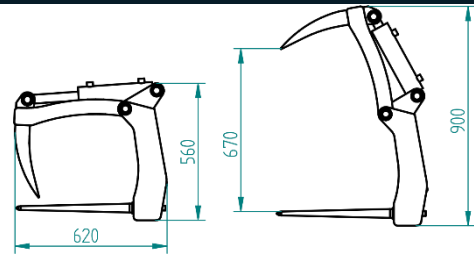
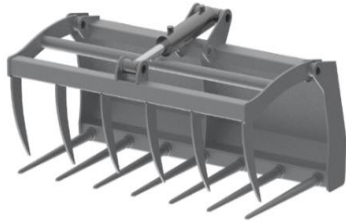
### FEATURES

- **COVER** - 4MM
- **TEETH** - 610MM

Nr. Art.	Width (mm)	Weight (kg)	Teeth (pieces)
<b>B109.100</b>	1000	55	6
<b>B109.120</b>	1200	67	7
<b>B109.140</b>	1400	78	8

## FORK WITH GRIPPER

INDEX: **B217**



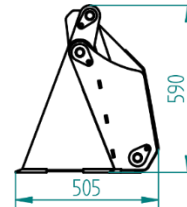
### FEATURES

- **COVER** - 4MM
- **TEETH BOTTOM** - 610MM

Nr. Art.	Width (mm)	Weight (kg)	Teeth (pieces)
<b>B217.100</b>	1000	90	5/6
<b>B217.120</b>	1200	108	6/7
<b>B217.140</b>	1400	126	7/8

## 4IN1 BUCKET MINI

INDEX: **A304**



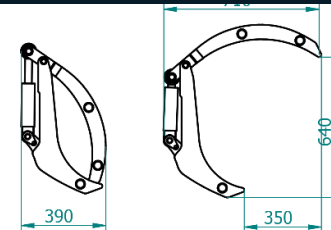
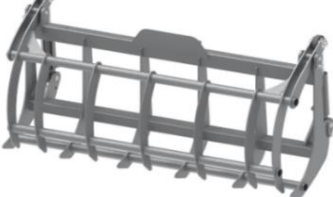
### FEATURES

- **COVER** - 5MM
- **SIDE** - 8MM
- **CUTTING EDGE** - HB500/110X16MM

Nr. Art.	Width (mm)	Weight (kg)	Capacity (m3)
<b>A304.120</b>	1200	132	0,16
<b>A304.140</b>	1400	152	0,18

## MULTIFUNCTION GRIPPER

INDEX: **J203**



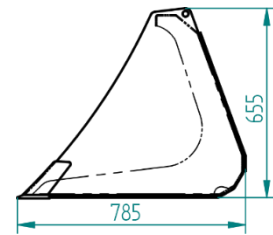
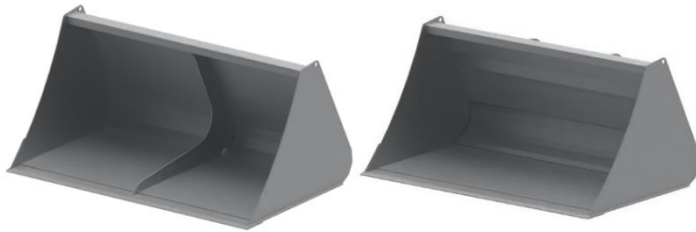
### FEATURES

- **THICKNESS** - 6MM

Nr. Art.	Width (mm)	Weight (kg)
<b>J203.140</b>	1400	79
<b>J203.165</b>	1650	91

## STANDARD BUCKET

INDEX: **A103**



### FEATURES

- **COVER** - 4MM
- **SIDE** - 5MM
- **CUTTING EDGE** - HB500/110X12MM

### OPTIONS

- **BOLT-ON TEETH** 15 €
- **ROUND BOTOM (INSTEAD OF RIB)** + 5% ON PRICE
- **OUTSIDE ROUNDED SIDE WALL** + 2% ON PRICE

### INDUSTRIAL BUCKET

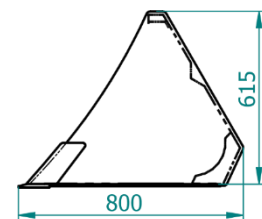
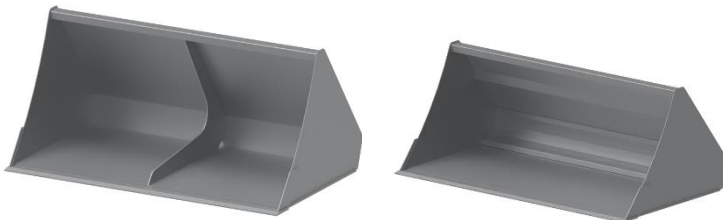
\*+20 % ON PRICE, BASED ON WIDTH

- **COVER** 5MM
- **SIDE** - 6MM
- **CUTTING EDGE** - HB500/110X16MM

Nr. Art.	Width (mm)	Weight (kg)	Capacity (m3)
A103.090	900	110	0,25
A103.100	1000	120	0,28
A103.110	1100	125	0,31
A103.120	1200	130	0,34
A103.130	1300	140	0,36
A103.140	1400	145	0,39
A103.150	1500	150	0,42
A103.160	1600	160	0,45
A103.180	1800	180	0,5
A103.200	2000	190	0,56
A103.220	2200	205	0,62
A103.230	2300	215	0,64
A103.240	2400	220	0,67
A103.250	2500	225	0,7

## STANDARD BUCKET 30 DEGREES

INDEX: **A109**



### FEATURES

- **COVER** - 4MM
- **SIDE** - 5MM
- **CUTTING EDGE** - HB500/110X12MM

### OPTIONS

- **BOLT-ON TEETH** + 15 €
- **ROUND BOTOM (INSTEAD OF RIB)** + 5% ON PRICE
- **OUTSIDE ROUNDED SIDE WALL** + 2% ON PRICE

### INDUSTRIAL BUCKET

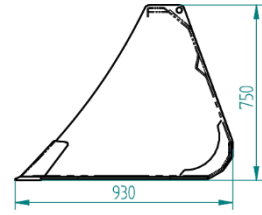
\*+20 % ON PRICE, BASED ON WIDTH

- **COVER** 5MM
- **SIDE** - 6MM
- **CUTTING EDGE** - HB500/110X16MM

Nr. Art.	Width (mm)	Weight (kg)	Capacity (m3)
A109.090	900	110	0,25
A109.100	1000	120	0,28
A109.110	1100	125	0,31
A109.120	1200	130	0,34
A109.130	1300	140	0,36
A109.140	1400	145	0,39
A109.150	1500	150	0,42
A109.160	1600	160	0,45
A109.180	1800	180	0,50
A109.200	2000	190	0,56
A109.220	2200	205	0,62
A109.230	2300	215	0,64
A109.240	2400	220	0,67
A109.250	2500	225	0,70

## VOLUME BUCKET

INDEX: **A110**



### FEATURES

- **COVER** - 5MM
- **SIDE** - 5MM
- **CUTTING EDGE** - HB500/110X16MM

### OPTIONS

- **BOLT-ON TEETH** +15 €
- **ROUND BOTOM (INSTEAD OF RIB)** + 5% ON PRICE
- **OUTSIDE ROUNDED SIDE WALL** + 2% ON PRICE

### INDUSTRIAL BUCKET

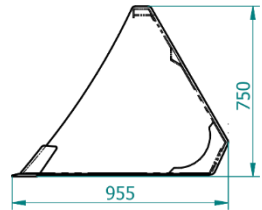
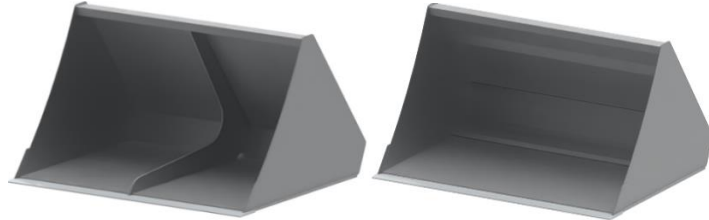
\*+20% ON PRICE, BASED ON WIDTH

- **COVER** - 6MM
- **SIDE** - 6MM
- **CUTTING EDGE** - HB500/150X16MM

Nr. Art.	Width (mm)	Weight (kg)	Capacity (m3)
A110.100	1000	170	0,38
A110.110	1100	180	0,42
A110.120	1200	190	0,46
A110.130	1300	195	0,49
A110.140	1400	205	0,53
A110.150	1500	215	0,57
A110.160	1600	225	0,61
A110.180	1800	255	0,68
A110.200	2000	275	0,76
A110.220	2200	295	0,84
A110.240	2400	310	0,91
A110.250	2500	315	0,95

## VOLUME BUCKET 30 DEGREES

INDEX: **A108**



### FEATURES

- **COVER** - 5MM
- **SIDE** - 5MM
- **CUTTING EDGE** - HB500/110X16MM

### OPTIONS

- **BOLT-ON TEETH** + 15 €
- **ROUND BOTOM (INSTEAD OF RIB)** + 5% ON PRICE
- **OUTSIDE ROUNDED SIDE WALL** + 2% ON PRICE

### INDUSTRIAL BUCKET

\*+20% ON PRICE, BASED ON WIDTH

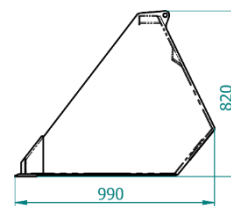
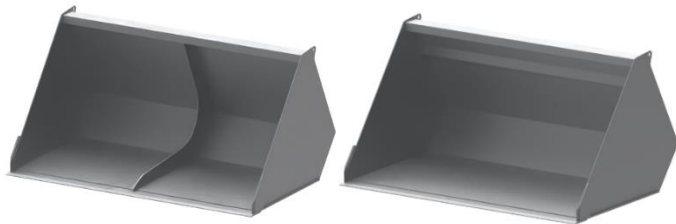
- **COVER** - 6MM
- **SIDE** - 6MM
- **CUTTING EDGE** - HB500/150X16MM

Nr. Art.	Width (mm)	Weight (kg)	Capacity (m3)
A108.100	1000	170	0,38
A108.110	1100	180	0,42
A108.120	1200	190	0,46
A108.130	1300	195	0,49
A108.140	1400	205	0,53
A108.150	1500	215	0,57
A108.160	1600	225	0,61
A108.180	1800	255	0,68
A108.200	2000	275	0,76
A108.220	2200	295	0,84
A108.240	2400	310	0,91
A108.250	2500	315	0,95



## VOLUME BUCKET HD

INDEX: **A135**



### FEATURES

- **COVER** - 5MM
- **SIDE** - 6MM
- **CUTTING EDGE** - HB500/110X16MM

### OPTIONS

- **BOLT-ON TEETH** + 15 €
- **ROUND BOTOM (INSTEAD OF RIB)** + 5% ON PRICE
- **OUTSIDE ROUNDED SIDE WALL** + 2% ON PRICE

### INDUSTRIAL BUCKET

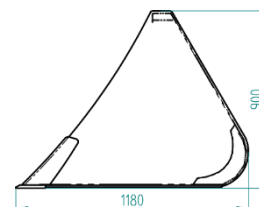
\*+20 % ON PRICE, BASED ON WIDTH

- **COVER** - 6MM
- **SIDE** - 6MM
- **CUTTING EDGE** - HB500/150X16MM

Nr. Art.	Width (mm)	Weight (kg)	Capacity (m3)
A135.100	1000	180	0,42
A135.110	1100	190	0,46
A135.120	1200	200	0,50
A135.130	1300	205	0,55
A135.140	1400	215	0,59
A135.150	1500	225	0,63
A135.160	1600	235	0,67
A135.180	1800	260	0,76
A135.200	2000	285	0,84
A135.220	2200	300	0,92
A135.240	2400	320	1,01
A135.250	2500	325	1,05

## VOLUME BUCKET XL

INDEX: **A113**



### FEATURES

- **COVER** - 5MM
- **SIDE** - 6MM
- **CUTTING EDGE** - HB500/150X16MM

### OPTIONS

- **BOLT-ON TEETH** + 15 €
- **ROUND BOTOM (INSTEAD OF RIB)** + 5% ON PRICE
- **OUTSIDE ROUNDED SIDE WALL** + 2% ON PRICE

### INDUSTRIAL BUCKET

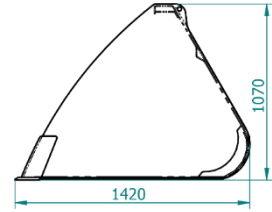
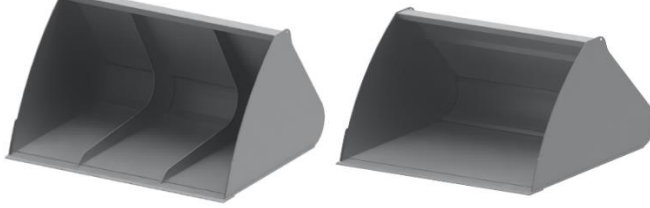
\*+20 % ON PRICE, BASED ON WIDTH

- **COVER** - 6MM
- **SIDE** - 8MM
- **CUTTING EDGE** - HB500/150X20MM

Nr. Art.	Width (mm)	Weight (kg)	Capacity (m3)
A113.160	1600	270	1,01
A113.180	1800	290	1,13
A113.200	2000	320	1,26
A113.220	2200	340	1,39
A113.230	2300	360	1,45
A113.240	2400	370	1,51
A113.250	2500	380	1,58

## VOLUME BUCKET XXL

INDEX: **A114**



### FEATURES

- **COVER** - 6MM
- **SIDE** - 8MM
- **CUTTING EDGE** - HB500/150X20MM

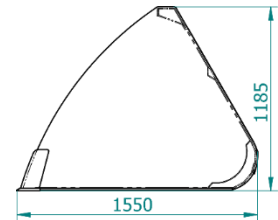
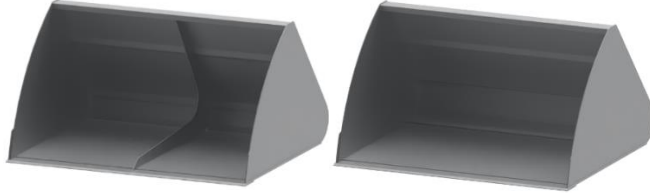
### OPTIONS

- **ROUND BOTOM (INSTEAD OF RIB)** + 5% ON PRICE
- **OUTSIDE ROUNDED SIDE WALL** + 2% ON PRICE

Nr. Art.	Width (mm)	Weight (kg)	Capacity (m3)
<b>A114.180</b>	1800	550	1,62
<b>A114.200</b>	2000	560	1,80
<b>A114.220</b>	2200	570	1,98
<b>A114.230</b>	2300	580	2,07
<b>A114.240</b>	2400	590	2,16
<b>A114.250</b>	2500	600	2,25

## VOLUME BUCKET XXXL

INDEX: **A122**



### FEATURES

- **COVER** - 6MM
- **SIDE** - 8MM
- **CUTTING EDGE** - HB500/150X20MM

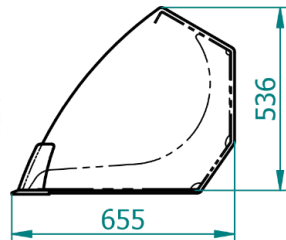
### OPTIONS

- **ROUND BOTOM (INSTEAD OF RIB)** + 5% ON PRICE
- **OUTSIDE ROUNDED SIDE WALL** + 2% ON PRICE

Nr. Art.	Width (mm)	Weight (kg)	Capacity (m3)
<b>A122.180</b>	1800	590	2,03
<b>A122.200</b>	2000	600	2,26
<b>A122.220</b>	2200	610	2,49
<b>A122.230</b>	2300	620	2,60
<b>A122.240</b>	2400	640	2,71
<b>A122.250</b>	2500	660	2,83

## AVANT STANDARD BUCKET

INDEX: **A115**



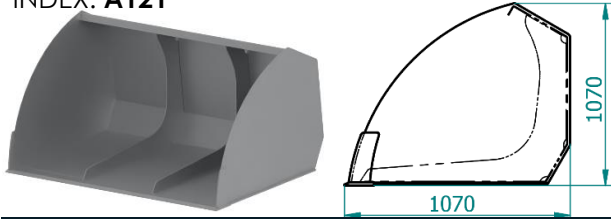
### FEATURES

- **COVER** - 4MM
- **SIDE** - 4MM
- **CUTTING EDGE** - HB500/110X12MM

Nr. Art.	Width (mm)	Weight (kg)	Capacity (m3)
<b>A115.080</b>	800	65	0,18
<b>A115.090</b>	900	70	0,21
<b>A115.100</b>	1000	75	0,23
<b>A115.110</b>	1100	80	0,25
<b>A115.120</b>	1200	85	0,28
<b>A115.130</b>	1300	90	0,30
<b>A115.140</b>	1400	95	0,32
<b>A115.150</b>	1500	100	0,35
<b>A115.160</b>	1600	105	0,37

## AVANT VOLUME BUCKET

INDEX: **A121**



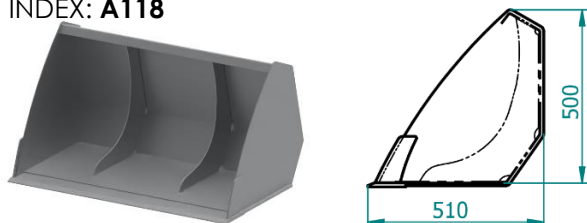
### FEATURES

- **COVER** - 4MM
- **SIDE** - 4MM
- **CUTTING EDGE** - HB500/110X12MM

Nr. Art.	Width (mm)	Weight (kg)	Capacity (m3)
A121.080	800	95	0,32
A121.090	900	100	0,36
A121.100	1000	105	0,40
A121.110	1100	110	0,44
A121.120	1200	115	0,48
A121.130	1300	120	0,52
A121.140	1400	125	0,56
A121.150	1500	130	0,60
A121.160	1600	135	0,64

## PIXY BUCKET MINI SQQ LOADER

INDEX: **A118**



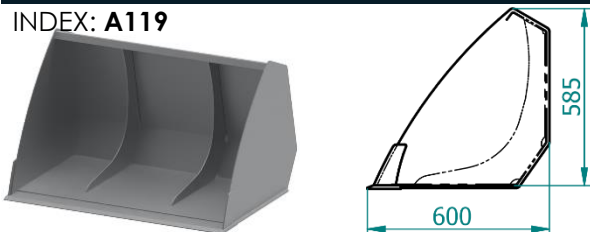
### FEATURES

- **COVER** - 4MM
- **SIDE** - 4MM
- **CUTTING EDGE** - HB500/110X12MM

Nr. Art.	Width (mm)	Weight (kg)	Capacity (m3)
A118.080	800	40	0,12
A118.090	900	43	0,14
A118.100	1000	45	0,15
A118.110	1100	50	0,17
A118.120	1200	55	0,18
A118.130	1300	60	0,20
A118.140	1400	65	0,21
A118.150	1500	70	0,23
A118.160	1600	75	0,24

## PIXY BUCKET STANDARD

INDEX: **A119**



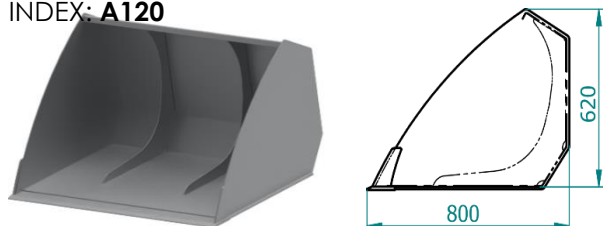
### FEATURES

- **COVER** - 4MM
- **SIDE** - 4MM
- **CUTTING EDGE** - HB500/110X12MM

Nr. Art.	Width (mm)	Weight (kg)	Capacity (m3)
A119.080	800	62	0,17
A119.090	900	67	0,19
A119.100	1000	72	0,21
A119.110	1100	76	0,23
A119.120	1200	81	0,25
A119.130	1300	86	0,27
A119.140	1400	91	0,29
A119.150	1500	96	0,32
A119.160	1600	100	0,34

## PIXY VOLUME BUCKET

INDEX: **A120**



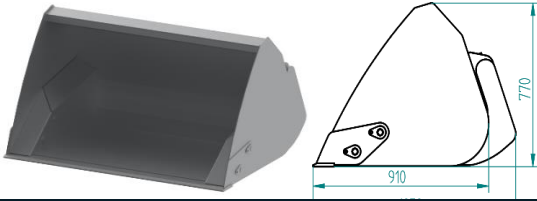
### FEATURES

- **COVER** - 4MM
- **SIDE** - 4MM
- **CUTTING EDGE** - HB500/110X12MM

Nr. Art.	Width (mm)	Weight (kg)	Capacity (m3)
A120.080	800	82	0,26
A120.090	900	87	0,29
A120.100	1000	90	0,32
A120.110	1100	95	0,35
A120.120	1200	100	0,38
A120.130	1300	105	0,42
A120.140	1400	110	0,45
A120.150	1500	115	0,48
A120.160	1600	120	0,51

## HIGH TIP BUCKET

INDEX: **A201**



### FEATURES

- **COVER** - 5MM
- **SIDE** - 6MM
- **CUTTING EDGE** - HB500/110X16MM

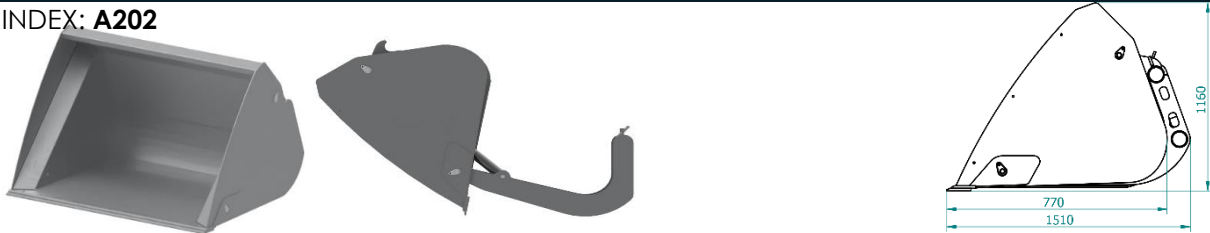
### OPTIONS

- **CUTTING EDGE** - HB500/150X16MM
- - 45€/M

Nr. Art.	Width (mm)	Weight (kg)	Capacity (m3)
A201.090	900	270	0,38
A201.100	1000	280	0,42
A201.110	1100	290	0,46
A201.120	1200	300	0,50
A201.130	1300	300	0,55
A201.140	1400	320	0,59
A201.150	1500	340	0,63
A201.160	1600	360	0,67
A201.180	1800	380	0,76
A201.200	2000	400	0,84
A201.220	2200	430	0,92
A201.240	2400	460	1,01
A201.250	2500	480	1,05

## HIGH TIP BUCKET XL

INDEX: **A202**



### FEATURES

- **COVER** - 6MM
- **SIDE** - 8MM
- **CUTTING EDGE** - HB500/150X16MM

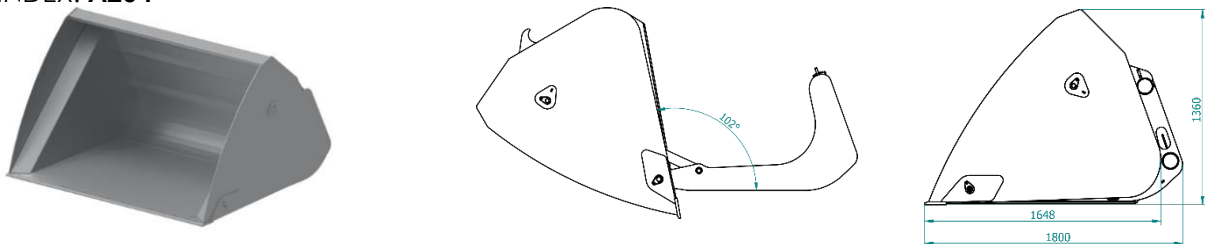
### OPTIONS

- **CUTTING EDGE** - HB500/150X20MM - 85€/M

Nr. Art.	Width (mm)	Weight (kg)	Capacity (m3)
A202.160	1600	610	1,44
A202.180	1800	660	1,62
A202.200	2000	720	1,80
A202.220	2200	780	1,98
A202.240	2400	820	2,16
A202.250	2500	850	2,25

## HIGH TIP BUCKET XXL

INDEX: **A204**



### FEATURES

- **COVER** - 6MM
- **SIDE** - 8MM
- **CUTTING EDGE** - HB500/150X16MM

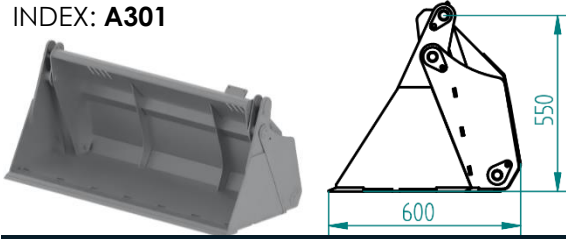
### OPTIONS

- **CUTTING EDGE** - HB500/150X20MM - 85€/M

Nr. Art.	Width (mm)	Weight (kg)	Capacity (m3)
A204.180	1800	1080	2,19
A204.200	2000	1130	2,43
A204.220	2200	1180	2,67
A204.240	2400	1230	2,92
A204.250	2500	1280	3,04
A204.270	2700	1310	3,30

## 4IN1 MINI BUCKET S

INDEX: **A301**



Nr. Art.	Width (mm)	Weight (kg)	Capacity (m3)
A301.090	900	160	0,23
A301.100	1000	170	0,25
A301.110	1100	180	0,28
A301.120	1200	200	0,30
A301.140	1400	220	0,35
A301.150	1500	230	0,38
A301.160	1600	240	0,40

### FEATURES

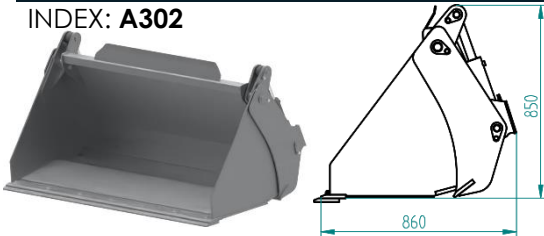
- DESIGNED FOR MINI LOADER –AVANT/PIXY
- **COVER** - 5MM
- **SIDE** - 10MM
- **CUTTING EDGE** - HB500/110X12MM

### OPTIONS

- **CUTTING EDGE** – HB500/150X16MM – 45 €/M
- **BOLT-ON TEETH** – 15 €

## 4IN1 BUCKET L

INDEX: **A302**



Nr. Art.	Width (mm)	Weight (kg)	Capacity (m3)
A302.100	1000	255	0,31
A302.110	1100	270	0,34
A302.120	1200	285	0,37
A302.140	1400	310	0,43
A302.150	1500	325	0,47
A302.160	1600	350	0,50
A302.180	1800	370	0,56
A302.200	2000	400	0,62
A302.220	2200	430	0,68
A302.230	2300	445	0,71
A302.240	2400	460	0,74

### FEATURES

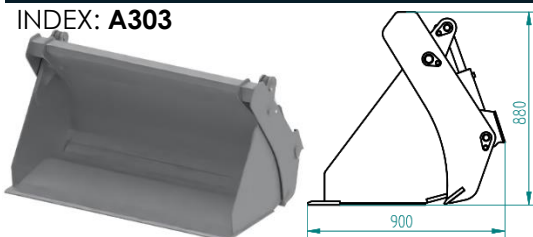
- **COVER** - 5MM
- **SIDE** - 10MM
- **CUTTING EDGE** - HB500/110X16MM

### OPTIONS

- **CUTTING EDGE** – HB500/150X16MM – 45 €/M
- **BOLT-ON TEETH** – 15 €

## 4IN1 BUCKET XL

INDEX: **A303**



Nr. Art.	Width (mm)	Weight (kg)	Capacity (m3)
A303.160	1600	400	0,54
A303.180	1800	440	0,61
A303.200	2000	480	0,68
A303.220	2200	520	0,75
A303.230	2300	560	0,78
A303.240	2400	590	0,82
A303.250	2500	620	0,85

### FEATURES

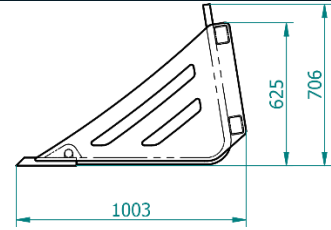
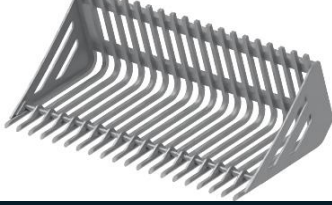
- **COVER** - 5MM
- **SIDE** - 10MM
- **CUTTING EDGE** - HB500/110X16MM

### OPTIONS

- **CUTTING EDGE** – HB500/150X16MM – 45 €/M
- **BOLT-ON TEETH** – 15 €

## STONE BUCKET

INDEX: **A701**



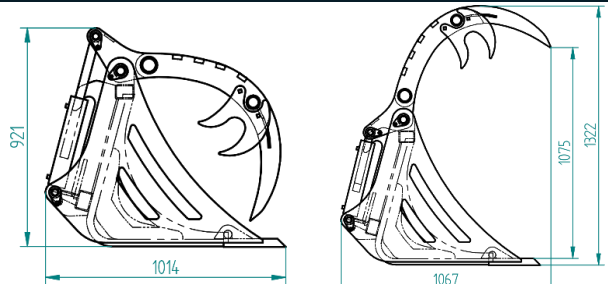
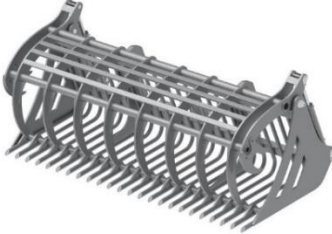
### FEATURES

- **SIDE** - 15MM
- **IRON ROD** - Ø 30MM
- **BAR SPACING** 70MM

Nr. Art.	Width (mm)	Weight (kg)	Capacity (m3)
<b>A701.140</b>	1400	260	0,36
<b>A701.160</b>	1600	280	0,42
<b>A701.180</b>	1800	290	0,47
<b>A701.200</b>	2000	310	0,52
<b>A701.220</b>	2200	340	0,57
<b>A701.240</b>	2400	375	0,62

## STONE BUCKET

INDEX: **A707**



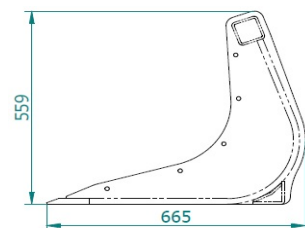
### FEATURES

- **SIDE** - 15MM
- **IRON ROD** - Ø 30MM
- **BAR SPACING** 70MM

Nr. Art.	Width (mm)	Weight (kg)	Capacity (m3)
<b>A707.140</b>	1400	370	0,54
<b>A707.160</b>	1600	415	0,62
<b>A707.180</b>	1800	460	0,70
<b>A707.200</b>	2000	510	0,78
<b>A707.220</b>	2200	550	0,85
<b>A707.240</b>	2400	600	0,93

## STONE BUCKET MINI

INDEX: **A702**



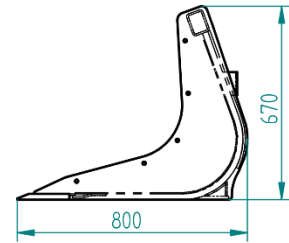
### FEATURES

- **SIDE** - 10MM
- **CUTTING EDGE** - HB500/110X16MM
- **IRON ROD** - Ø 16MM
- **BAR SPACING** 40MM

Nr. Art.	Width (mm)	Weight (kg)	Capacity (m3)
<b>A702.090</b>	900	95	0,12
<b>A702.100</b>	1000	100	0,13
<b>A702.110</b>	1100	105	0,14
<b>A702.120</b>	1200	110	0,16
<b>A702.130</b>	1300	115	0,17
<b>A702.140</b>	1400	120	0,18
<b>A702.150</b>	1500	125	0,20
<b>A702.160</b>	1600	130	0,21

## STONE BUCKET

INDEX: **A706**



### FEATURES

- **SIDE** - 10MM
- **CUTTING EDGE** - HB500/150X20MM
- **IRON ROD** - Ø 20MM
- **BAR SPACING** 40MM

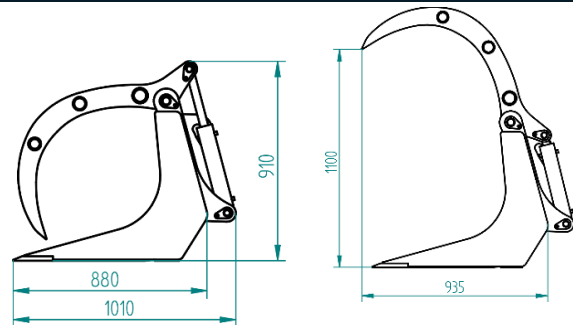
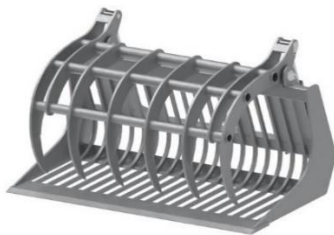
### OPTIONS

- **INNER PLATE** – 4MM

Nr. Art.	Width (mm)	Weight (kg)	Capacity (m3)
A706.090	900	135	0,17
A706.100	1000	140	0,19
A706.110	1100	145	0,21
A706.120	1200	150	0,23
A706.130	1300	160	0,25
A706.140	1400	170	0,27
A706.150	1500	180	0,29
A706.160	1600	190	0,30
A706.180	1800	200	0,34
A706.200	2000	210	0,38
A706.220	2200	220	0,42
A706.240	2400	230	0,46

## STONE BUCKET

INDEX: **A708**



### FEATURES

- **SIDE** - 10MM
- **CUTTING EDGE** - HB500/150X20MM
- **IRON ROD** - Ø 20MM
- **BAR SPACING** 40MM

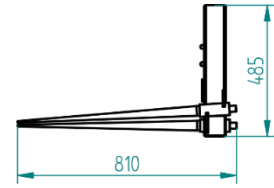
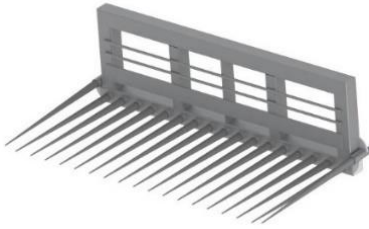
### OPTIONS

- **INNER PLATE** – 4MM

Nr. Art.	Width (mm)	Weight (kg)	Capacity (m3)
A708.090	900	250	0,35
A708.100	1000	270	0,39
A708.110	1100	290	0,43
A708.120	1200	310	0,47
A708.130	1300	330	0,50
A708.140	1400	350	0,54
A708.150	1500	370	0,58
A708.160	1600	390	0,62
A708.180	1800	430	0,70
A708.200	2000	470	0,78
A708.220	2200	510	0,86
A708.240	2400	560	0,93

## STONE FORK

INDEX: **B104**



### FEATURES

- **TEETH** – 1100MM
- **SPACE BETWEEN TEETH** 90MM

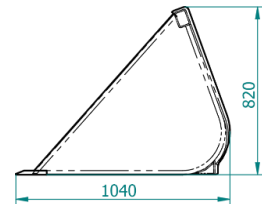
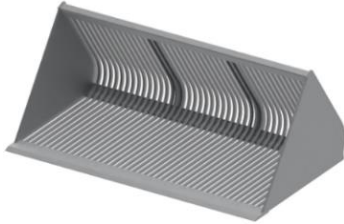
### OPTIONS

- **ADDITIONAL TEETH** – 25€

Nr. Art.	Width (mm)	Weight (kg)	Teeth (pieces)
B104.090	900	65	10
B104.100	1000	71	11
B104.120	1200	85	13
B104.130	1300	93	14
B104.140	1400	100	15
B104.150	1500	108	16
B104.160	1600	115	17
B104.170	1700	130	19
B104.180	1800	140	20

## POTATO/BETROOT BUCKET

INDEX: **A704**



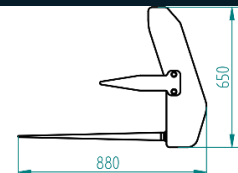
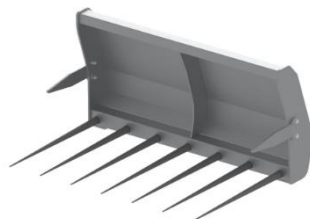
### FEATURES

- **SIDE** - 10MM
- **CUTTING EDGE** - HB500/150X20MM`
- **IRON ROD** - Ø 20MM
- **BAR SPACING** 35MM

Nr. Art.	Width (mm)	Weight (kg)	Capacity (m3)
A704.140	1400	260	0,64
A704.150	1500	280	0,69
A704.160	1600	300	0,74
A704.180	1800	320	0,83
A704.200	2000	340	0,92
A704.220	2200	360	1,01
A704.240	2400	370	1,10

## MANURE FORK S

INDEX: **B103**



### FEATURES

- **COVER** - 4MM
- **TEETH** – 810MM
- **SPACE BETWEEN TEETH** 180MM

### OPTIONS

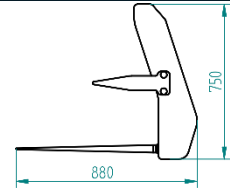
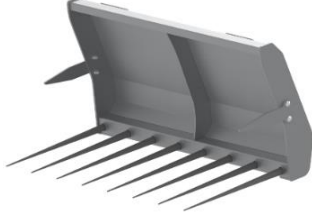
- **ADDITIONAL TEETH** – 25€

Nr. Art.	Width (mm)	Weight (kg)	Teeth (pieces)
B103.090	900	75	6
B103.100	1000	80	6
B103.110	1100	82	7
B103.120	1200	85	7
B103.130	1300	85	7
B103.140	1400	88	8
B103.150	1500	93	8
B103.160	1600	102	8
B103.180	1800	111	9



## MANURE FORK

INDEX: **B101**



### FEATURES

- **COVER** - 4MM
- **TEETH** - 810MM
- **SPACE BETWEEN TEETH** 180MM

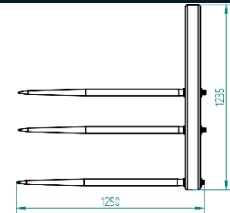
### OPTIONS

- **ADDITIONAL TEETH** - 25€

Nr. Art.	Width (mm)	Weight (kg)	Teeth (pieces)
<b>B101.140</b>	1400	88	8
<b>B101.150</b>	1500	93	8
<b>B101.160</b>	1600	102	8
<b>B101.180</b>	1800	111	9
<b>B101.200</b>	2000	123	10
<b>B101.220</b>	2200	135	11
<b>B101.230</b>	2300	140	12
<b>B101.240</b>	2400	145	12

## MANURE FORK XL

INDEX: **B106**



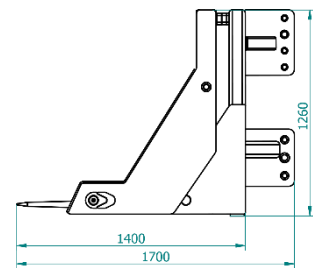
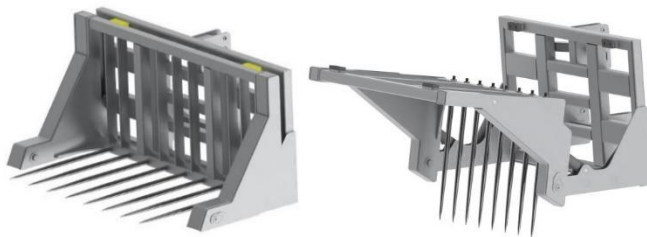
### FEATURES

- **TEETH** - 1250MM
- **SPACE BETWEEN TEETH** 175-190MM

Nr. Art.	Width (mm)	Weight (kg)	Teeth (pieces)
<b>B106.180</b>	1800	400	10+4
<b>B106.200</b>	2000	420	11+4
<b>B106.220</b>	2200	440	12+4
<b>B106.240</b>	2400	480	13+4
<b>B106.260</b>	2600	520	14+4
<b>B106.280</b>	2800	560	15+4
<b>B106.300</b>	3000	600	16+4

## MANURE FORK MAXI

INDEX: **B401**



### FEATURES

- **TEETH** - 1250MM
- **SPACE BETWEEN TEETH** 230MM

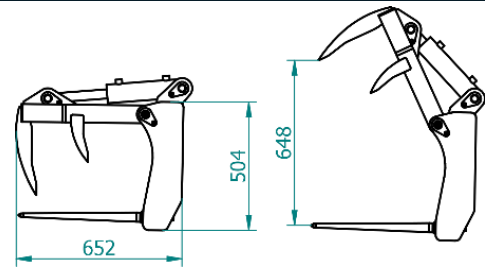
### OPTIONS

- **ADDITIONAL TEETH** - 25€

Nr. Art.	Width (mm)	Weight (kg)	Teeth (pieces)
<b>B401.250</b>	2500	1500	8
<b>B401.270</b>	2700	1620	9
<b>B401.300</b>	3000	1800	10

## FORK WITH GRIPPER MINI

INDEX: **B205**



### FEATURES

- **COVER** - 4MM
- **TEETH** - 610MM
- **SPACE BETWEEN TEETH** 180MM

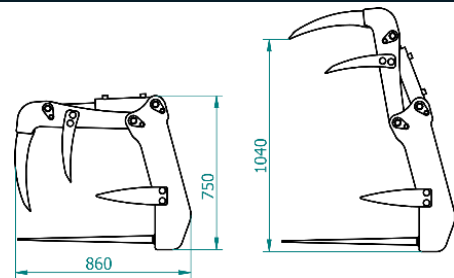
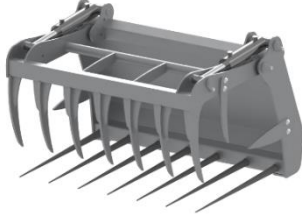
### OPTIONS

- **ADDITIONAL TEETH** - 25€

Nr. Art.	Width (mm)	Weight (kg)	Capacity (m3)	Teeth (pieces)
<b>B205.090</b>	900	100	0,17	5/5
<b>B205.100</b>	1000	110	0,19	6/6
<b>B205.110</b>	1100	120	0,21	6/6
<b>B205.120</b>	1200	125	0,23	7/7
<b>B205.130</b>	1300	130	0,25	7/7
<b>B205.140</b>	1400	135	0,27	8/8
<b>B205.150</b>	1500	140	0,29	8/8
<b>B205.160</b>	1600	150	0,30	9/9

## FORK WITH GRIPPER S - LOADER

INDEX: **B201**



### FEATURES

- **COVER** - 4MM
- **TEETH** - 810MM
- **SPACE BETWEEN TEETH** - 180MM
- **TOP TEETH WELDED**

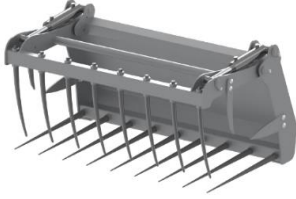
### OPTIONS

- **SPLIT GRAB** - 125€



Nr. Art.	Width (mm)	Weight (kg)	Capacity (m3)	Teeth (pieces)
<b>B201.090</b>	900	175	0,34	5/5
<b>B201.100</b>	1000	185	0,38	6/6
<b>B201.110</b>	1100	205	0,42	6/6
<b>B201.120A</b>	1200	220	0,46	7/7
<b>B201.120</b>	1200	230	0,46	7/7
<b>B201.130</b>	1300	235	0,49	8/8
<b>B201.140</b>	1400	240	0,53	8/8
<b>B201.150</b>	1500	250	0,57	8/8
<b>B201.160</b>	1600	260	0,61	9/9
<b>B201.180</b>	1800	280	0,68	9/9

**FORK WITH GRIPPER S - LOADER**

 INDEX: **B202**

**FEATURES**

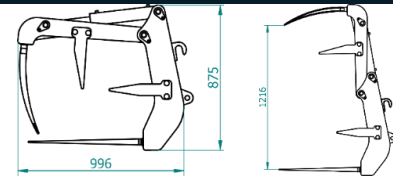
- **COVER** - 4MM
- **TEETH** - 810MM
- **SPACE BETWEEN TEETH** - 180MM
- **TOP TEETH** - 600MM

**OPTIONS**

- **SPLIT GRAB** - 125€

Nr. Art.	Width (mm)	Weight (kg)	Capacity (m3)	Teeth (pieces)
<b>B202.090</b>	900	175	0,34	4/5
<b>B202.100</b>	1000	185	0,38	5/6
<b>B202.110</b>	1100	205	0,42	5/6
<b>B202.120A</b>	1200	220	0,46	6/7
<b>B202.120</b>	1200	230	0,46	6/7
<b>B202.130</b>	1300	235	0,49	6/7
<b>B202.140</b>	1400	240	0,53	7/8
<b>B202.150</b>	1500	250	0,57	7/8
<b>B202.160</b>	1600	260	0,61	8/9
<b>B202.180</b>	1800	280	0,68	8/9

**FORK WITH GRIPPER L - STANDARD**

 INDEX: **B203**

**FEATURES**

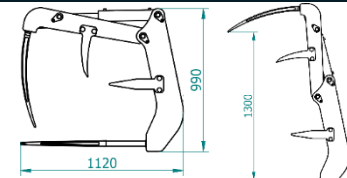
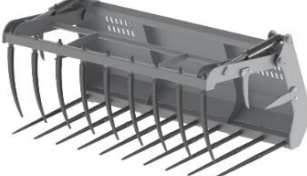
- **COVER** - 4MM
- **TEETH** - 810MM
- **SPACE BETWEEN TEETH** - 180MM
- **BOTTOM TEETH** 810MM
- **TOP TEETH** 680MM

**OPTIONS**

- **SPLIT GRAB** - 125€

Nr. Art.	Width (mm)	Weight (kg)	Capacity (m3)	Teeth (pieces)
<b>B203.120A</b>	1200	240	0,62	6/7
<b>B203.120</b>	1200	250	0,62	6/7
<b>B203.130</b>	1300	255	0,68	6/7
<b>B203.140</b>	1400	260	0,73	7/8
<b>B203.150</b>	1500	270	0,78	7/8
<b>B203.160</b>	1600	280	0,83	8/9
<b>B203.180</b>	1800	300	0,94	8/9
<b>B203.200</b>	2000	320	1,04	9/10
<b>B203.220</b>	2200	340	1,14	10/11
<b>B203.240</b>	2400	360	1,25	11/12

**FORK WITH GRIPPER XL**

 INDEX: **B206**

**FEATURES**

- **COVER** - 4MM
- **BOTTOM TEETH** - 1000MM
- **TOP TEETH** - 770MM

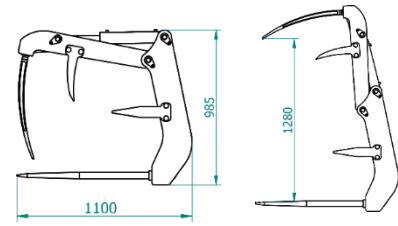
**OPTIONS**

- **SPLIT GRAB** - 240€

Nr. Art.	Width (mm)	Weight (kg)	Capacity (m3)	Teeth (pieces)
<b>B206.180</b>	1800	360	1,26	8/9
<b>B206.200</b>	2000	380	1,40	9/10
<b>B206.220</b>	2200	400	1,54	10/11
<b>B206.240</b>	2400	420	1,68	11/12
<b>B206.250</b>	2500	440	1,75	11/12

## FORK WITH GRIPPER XL HD

INDEX: **B211**



### FEATURES

- **COVER** - 5MM
- **BOTTOM TEETH** - 1000MM
- **TOP TEETH** - 770MM

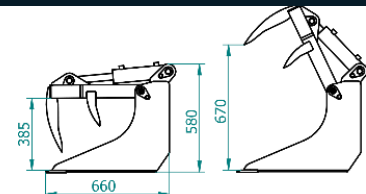
### OPTIONS

- **ADDITIONAL TEETH** - 25€
- **SPLIT GRAB** - 240€
- **TOP TEETH ARE WELDED**

Nr. Art.	Width (mm)	Weight (kg)	Capacity (m3)	Teeth (pieces)
<b>B211.180</b>	1800	450	1,26	8/9
<b>B211.200</b>	2000	470	1,40	9/10
<b>B211.220</b>	2200	500	1,54	10/11
<b>B211.240</b>	2400	530	1,68	11/12
<b>B211.250</b>	2500	550	1,75	11/12

## BUCKET WITH GRIPPER MINI

INDEX: **A503**



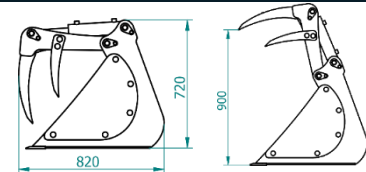
### FEATURES

- **COVER** - 4MM
- **SIDE** - 10MM
- **CUTTING EDGE** - HB500/110X12MM

Nr. Art.	Width (mm)	Weight (kg)	Capacity (m3)	Teeth (pieces)
<b>A503.090</b>	900	130	0,18	4
<b>A503.100</b>	1000	137	0,20	5
<b>A503.110</b>	1100	145	0,22	5
<b>A503.120</b>	1200	152	0,24	6
<b>A503.130</b>	1300	165	0,26	6
<b>A503.140</b>	1400	170	0,28	7
<b>A503.150</b>	1500	175	0,30	7
<b>A503.160</b>	1600	180	0,32	8
<b>A503.180</b>	1800	185	0,36	8

## BUCKET WITH GRIPPER S - LOADER

INDEX: **A505**



### FEATURES

- **COVER** - 4MM
- **SIDE** - 10MM
- **CUTTING EDGE** - HB500/110X12MM
- **TOP TEETH ARE WELDED**

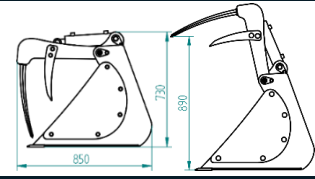
### OPTIONS

- **SPLIT GRAB** - 125€

Nr. Art.	Width (mm)	Weight (kg)	Capacity (m3)	Teeth (pieces)
<b>A505.090</b>	900	205	0,36	4
<b>A505.100</b>	1000	215	0,40	5
<b>A505.110</b>	1100	225	0,44	5
<b>A505.120A</b>	1200	245	0,48	6
<b>A505.120</b>	1200	255	0,48	6
<b>A505.130</b>	1300	260	0,52	6
<b>A505.140</b>	1400	265	0,56	7
<b>A505.150</b>	1500	275	0,60	7
<b>A505.160</b>	1600	290	0,64	8
<b>A505.180</b>	1800	320	0,72	8

## BUCKET WITH GRIPPER S - LOADER

INDEX: **A502**



### FEATURES

- **COVER** - 4MM
- **SIDE** - 10MM
- **CUTTING EDGE** - HB500/110X12MM
- **TOP TEETH** - 600MM

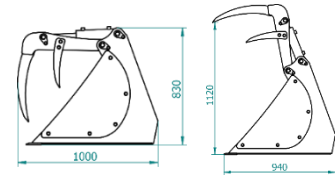
### OPTIONS

- **SPLIT GRAB** - 125€

Nr. Art.	Width (mm)	Weight (kg)	Capacity (m3)	Teeth (pieces)
<b>A502.090</b>	900	205	0,36	4
<b>A502.100</b>	1000	215	0,40	5
<b>A502.110</b>	1100	225	0,44	5
<b>A502.120A</b>	1200	245	0,48	6
<b>A502.120</b>	1200	255	0,48	6
<b>A502.130</b>	1300	260	0,52	6
<b>A502.140</b>	1400	265	0,56	7
<b>A502.150</b>	1500	275	0,60	7
<b>A502.160</b>	1600	290	0,64	8
<b>A502.180</b>	1800	320	0,72	8

## BUCKET WITH GRIPPER L - STANDARD

INDEX: **A501**



### FEATURES

- **COVER** - 5MM
- **SIDE** - 10MM
- **CUTTING EDGE** - HB500/110X16MM
- TOP TEETH ARE WELDED

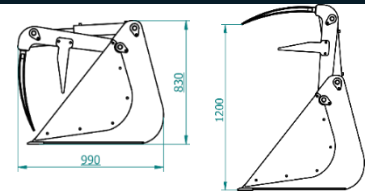
### OPTIONS

- **SPLIT GRAB** - 240€

Nr. Art.	Width (mm)	Weight (kg)	Capacity (m3)	Teeth (pieces)
<b>A501.120A</b>	1200	295	0,65	6
<b>A501.120</b>	1200	305	0,65	6
<b>A501.130</b>	1300	310	0,70	6
<b>A501.140</b>	1400	315	0,76	7
<b>A501.150</b>	1500	325	0,81	7
<b>A501.160</b>	1600	340	0,86	8
<b>A501.180</b>	1800	385	0,97	8
<b>A501.200</b>	2000	425	1,08	9
<b>A501.220</b>	2200	445	1,19	10

## BUCKET WITH GRIPPER L - STANDARD

INDEX: **A504**



### FEATURES

- **COVER** - 5MM
- **SIDE** - 10MM
- **CUTTING EDGE** - HB500/110X16MM
- **TOP TEETH** - 680MM

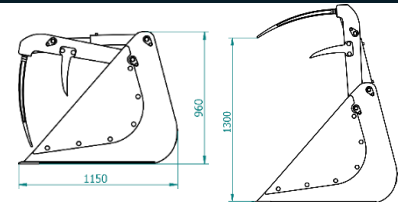
### OPTIONS

- **SPLIT GRAB** - 240€

Nr. Art.	Width (mm)	Weight (kg)	Capacity (m3)	Teeth (pieces)
A504.120A	1200	295	0,65	6
A504.120	1200	305	0,65	6
A504.130	1300	310	0,70	6
A504.140	1400	315	0,76	7
A504.150	1500	325	0,81	7
A504.160	1600	340	0,86	8
A504.180	1800	385	0,97	8
A504.200	2000	425	1,08	9
A504.220	2200	445	1,19	10
A504.240	2400	470	1,30	11

## BUCKET WITH GRIPPER XL

INDEX: **A512**



### FEATURES

- **COVER** - 6MM
- **SIDE** - 12MM
- **CUTTING EDGE** - HB500/150X16MM
- **TOP TEETH** - 770MM

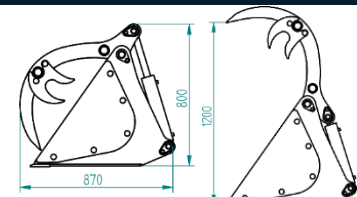
### OPTIONS

- **SPLIT GRAB** - 240€

Nr. Art.	Width (mm)	Weight (kg)	Capacity (m3)	Teeth (pieces)
A512.180	1800	510	1,26	8/9
A512.200	2000	550	1,40	9/10
A512.220	2200	590	1,54	10/11
A512.240	2400	620	1,68	11/12
A512.250	2500	640	1,75	11/12

## BUCKET WITH GRIPPER S

INDEX: **A404**



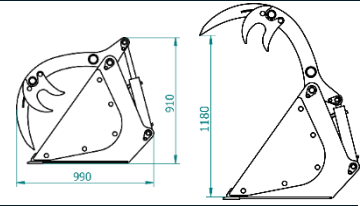
### GRUNDAUSSTATUNG

- **COVER** 5MM
- **SIDE** - 10MM
- **CUTTING EDGE** - HB500/110X16MM
- **TOP TEETH** - 12MM

Nr. Art.	Width (mm)	Weight (kg)	Capacity (m3)	Teeth (pieces)
A404.090	900	240	0,31	3
A404.100	1000	250	0,34	3
A404.110	1100	260	0,37	4
A404.120	1200	265	0,41	4
A404.130	1300	275	0,44	5
A404.140	1400	290	0,48	5
A404.150	1500	305	0,51	6
A404.160	1600	320	0,54	6
A404.180	1800	340	0,61	7

## BUCKET WITH GRAB L

INDEX: **A413**



### FEATURES

- **COVER** - 5MM
- **SIDE** - 10MM
- **CUTTING EDGE** - HB500/110X16MM
- **TOP TEETH** - ARE WELDED

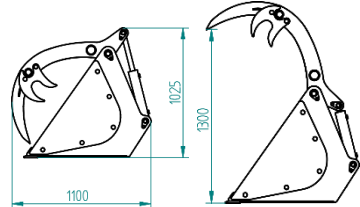
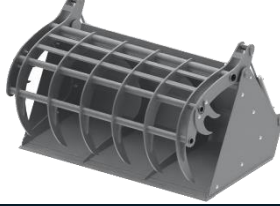
### OPTIONS

- **CUTTING EDGE** - HB500/150X16MM - 45€/M

Nr. Art.	Width (mm)	Weight (kg)	Capacity (m3)	Teeth (pieces)
<b>A413.120</b>	1200	320	0,53	4
<b>A413.130</b>	1300	335	0,57	4
<b>A413.140</b>	1400	350	0,62	4
<b>A413.150</b>	1500	365	0,66	5
<b>A413.160</b>	1600	380	0,70	5
<b>A413.180</b>	1800	395	0,79	6
<b>A413.200</b>	2000	420	0,88	6
<b>A413.220</b>	2200	450	0,97	7
<b>A413.240</b>	2400	480	1,06	7

## BUCKET WITH GRAB XL

INDEX: **A417**



### FEATURES

- **COVER** - 5MM
- **SIDE** - 10MM
- **CUTTING EDGE** - HB500/110X16MM
- **TOP TEETH** - ARE WELDED

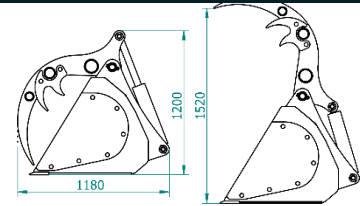
### OPTIONS

- **CUTTING EDGE** - HB500/150X16MM - 45€/M
- **PRESSURE LIMITING VALVE (DBV)** - 130€

Nr. Art.	Width (mm)	Weight (kg)	Capacity (m3)	Teeth (pieces)
<b>A417.160</b>	1600	540	0,86	5
<b>A417.180</b>	1800	570	0,97	6
<b>A417.200</b>	2000	590	1,08	6
<b>A417.220</b>	2200	610	1,19	7
<b>A417.230</b>	2300	630	1,24	7
<b>A417.240</b>	2400	650	1,30	7

## BUCKET WITH GRAB XXL

INDEX: **A412**



### FEATURES

- **COVER** - 6MM
- **SIDE** - 12MM
- **CUTTING EDGE** - HB500/150X16MM
- **TOP TEETH** - ARE WELDED

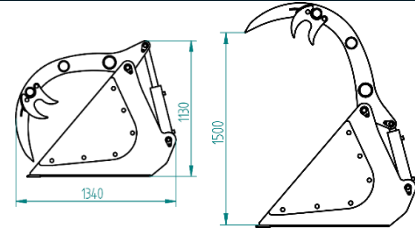
### OPTIONS

- **CUTTING EDGE** - HB500/150X20MM - 45€/M
- **PRESSURE LIMITING VALVE (DBV)** - 130€

Nr. Art.	Width (mm)	Weight (kg)	Capacity (m3)	Teeth (pieces)
<b>A412.180</b>	1800	630	1,00	6
<b>A412.200</b>	2000	690	1,1	6
<b>A412.220</b>	2200	750	1,2	7
<b>A412.230</b>	2300	780	1,25	7
<b>A412.240</b>	2400	810	1,30	7
<b>A412.250</b>	2500	840	1,35	7

## BUCKET WITH GRAB XXL

INDEX: **A403**



### FEATURES

- **COVER** - 6MM
- **SIDE** - 12MM
- **CUTTING EDGE** - HB500/150X16MM
- **TOP TEETH** - ARE WELDED

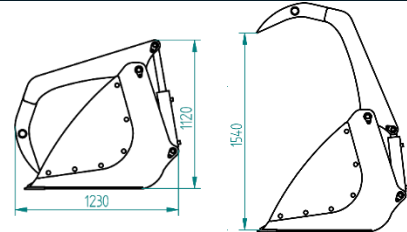
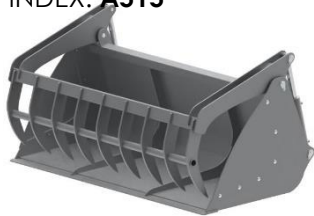
### OPTIONS

- **CUTTING EDGE** - HB500/150X20MM - 45€/M
- **PRESSURE LIMITING VALVE (DBV)** - 130€

Nr. Art.	Width (mm)	Weight (kg)	Capacity (m3)	Teeth (pieces)
<b>A403.180</b>	1800	740	1,44	6
<b>A403.200</b>	2000	750	1,60	6
<b>A403.220</b>	2200	780	1,76	7
<b>A403.230</b>	2300	790	1,84	7
<b>A403.240</b>	2400	810	1,92	7
<b>A403.250</b>	2500	820	2,00	8

## BUCKET WITH GRAB XXL

INDEX: **A515**



### FEATURES

- **COVER** - 6MM
- **SIDE** - 12MM
- **CUTTING EDGE** - HB500/150X16MM
- **TOP TEETH** 18MM

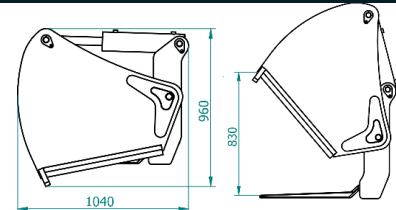
### OPTIONS

- **CUTTING EDGE** - HB500/150X20MM - 45€/M
- **PRESSURE LIMITING VALVE (DBV)** - 130€

Nr. Art.	Width (mm)	Weight (kg)	Capacity (m3)	Teeth (pieces)
<b>A515.180</b>	1800	660	1,44	6
<b>A515.200</b>	2000	670	1,60	6
<b>A515.220</b>	2200	680	1,76	7
<b>A515.230</b>	2300	700	1,84	7
<b>A515.240</b>	2400	720	1,92	7
<b>A515.250</b>	2500	750	2,00	8

## SILAGE CUTTER

INDEX: **C101**



### FEATURES

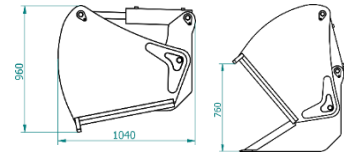
- **SIDE** - 10MM
- **FRONT CUTTING KNIFE** BOLT-ON (NOT WELDED)

Nr. Art.	Width (mm)	Weight (kg)	Capacity (m3)	Teeth (pieces)
<b>C101.100</b>	1000	420	0,46	8
<b>C101.120</b>	1200	460	0,55	9
<b>C101.140</b>	1400	500	0,64	10
<b>C101.160</b>	1600	550	0,74	11
<b>C101.180</b>	1800	600	0,83	12
<b>C101.200</b>	2000	650	0,92	13
<b>C101.220</b>	2200	700	1,01	14



## SILAGE CUTTER BUCKET

INDEX: **C201**



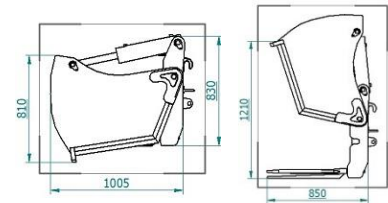
### FEATURES

- **SIDE** – 10MM
- **COVER** – 6MM
- **CUTTING EDGE** – HB500/110X16MM
- FRONT CUTTING KNIFE BOLT-ON

Nr. Art.	Width (mm)	Weight (kg)	Capacity (m3)
<b>C201.100</b>	1000	450	0,44
<b>C201.120</b>	1200	490	0,53
<b>C201.140</b>	1400	530	0,62
<b>C201.160</b>	1600	590	0,70
<b>C201.180</b>	1800	630	0,79
<b>C201.200</b>	2000	680	0,88
<b>C201.220</b>	2200	730	0,97

## SILOSCHNEIDGABEL 3IN1

INDEX: **C103**



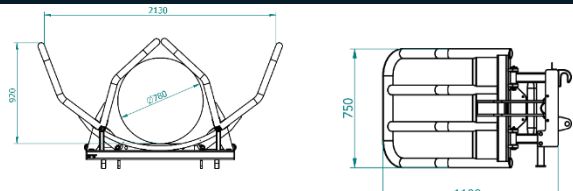
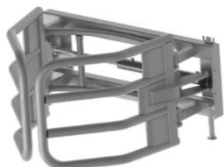
### GRUNDAUSSTATTUNG

- **SEITENWAND** – 10MM
- **MANTELBLECH** – 6MM
- **SCHURRSCHIENE**
- HB500/110X16MM

Nr. Art.	Arbeitsbreite (mm)	Eigengewicht (kg)	Volumen (m3)
<b>C103.160</b>	1600	590	0,80
<b>C103.180</b>	1800	630	0,90

## BALE GRIPPER - ONE CYLINDER

INDEX: **D101**



### FEATURES

- **PIPE** – Ø 60 x 3MM

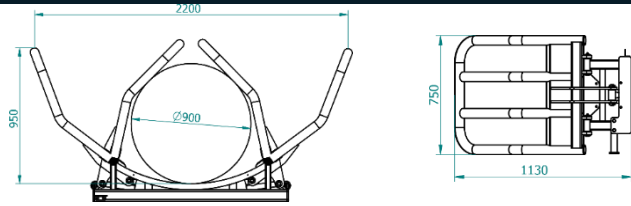
### OPTIONS

- **PRESSURE LIMITING VALVE (DHV)**– 90 €

Nr. Art.	Capacity	Weight (kg)
<b>D101</b>	1000	190

## BALE GRIPPER - TWO CYLINDER

INDEX: **D105**



### FEATURES

- PIPE – Ø 60 x 3MM

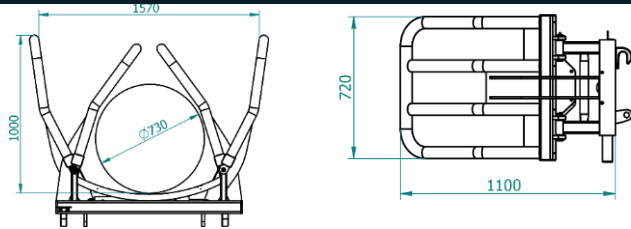
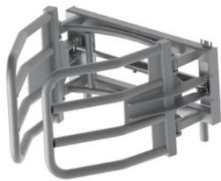
Nr. Art.	Capacity	Weight (kg)
<b>D105</b>	1000	195

### OPTIONS

- PRESSURE LIMITING VALVE (DHV) – 90 €

## BALE GRIPPER – ONE CYLINDER

INDEX: **D107**



### FEATURES

- PIPE – Ø 60 x 3MM

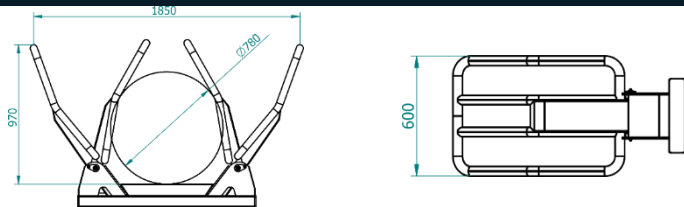
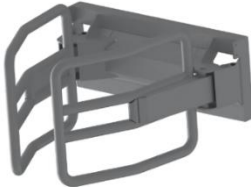
Nr. Art.	Capacity	Weight (kg)
<b>D107</b>	1000	165

### OPTIONS

- PRESSURE LIMITING VALVE (DHV) – 90 €

## BALE GRIPPER ONE CYLINDER PRO

INDEX: **D109**



### FEATURES

- PIPE – Ø 60 x 3MM

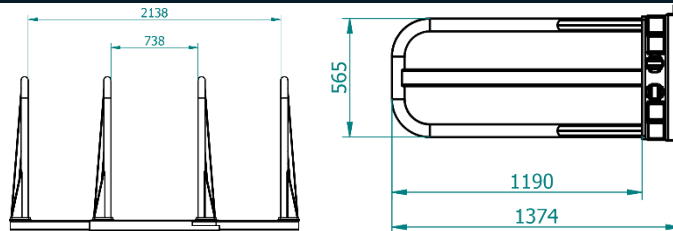
Nr. Art.	Capacity	Weight (kg)
<b>D109</b>	1000	220

### OPTIONS

- PRESSURE LIMITING VALVE (DHV) – 90 €

## SQUARE BALE GRIPPER

INDEXES: **D103**



### FEATURES

- PIPE – Ø 60 x 3MM

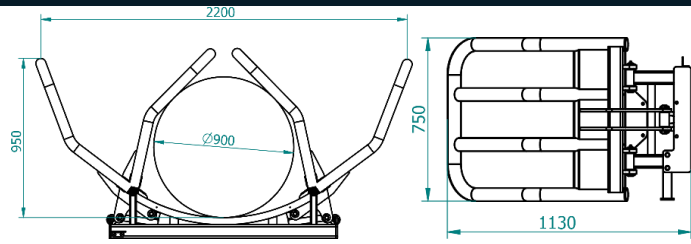
Nr. Art.	Capacity	Weight (kg)
<b>D103</b>	1000	220

### OPTIONS

- PRESSURE LIMITING VALVE (DHV) – 90 €

## BALE GRIPPER - TWO CYLINDER

INDEX: **D105**



### FEATURES

- PIPE – Ø 60 x 3MM

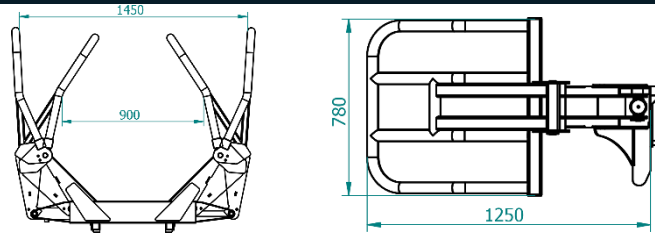
Nr. Art.	Capacity	Weight (kg)
<b>D105</b>	1000	195

### OPTIONS

- PRESSURE LIMITING VALVE (DHV) – 90 €

## BALE GRIPPER - ONE CYLINDER MINI

INDEX: **D108**



### FEATURES

- PIPE – Ø 48 x 3MM

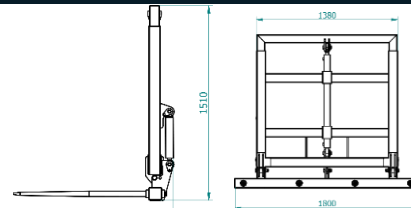
Nr. Art.	Capacity	Weight (kg)
<b>D108</b>	1000	130

### OPTIONS

- PRESSURE LIMITING VALVE (DHV) – 90 €

## BALE TRANSPORTER

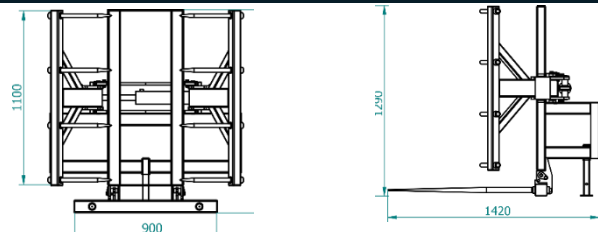
INDEX: **D203**



Nr. Art.	Weight [kg]	Version
<b>D203</b>	260	Standard

## VERTICAL BALE GRIPPER

INDEX: **D111**



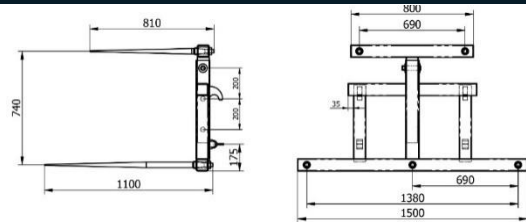
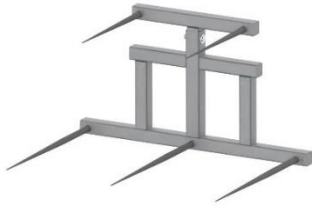
Nr. Art.	Weight [kg]	Version
<b>D111.001</b>	180	Standard
<b>D111.002</b>	220	With bottom arm

### OPTIONS

- BOTTOM ARM WITH TEETH – 240€

## BALE FORK WITH ADJUSTABLE ARM

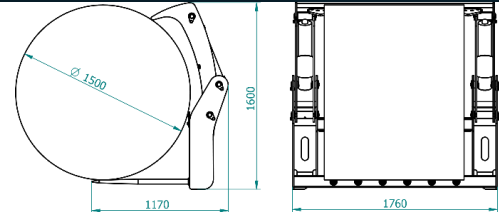
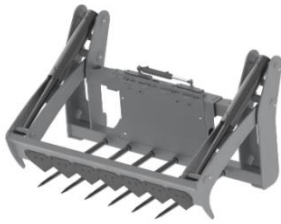
INDEX: **D509**



Nr. Art.	Version
<b>D509</b>	Standard

## BALE CUTTER

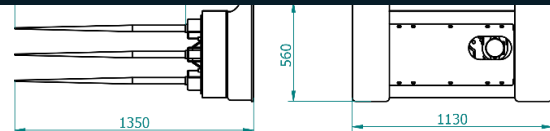
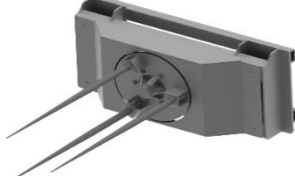
INDEX: **D302**



Nr. Art.	Capacity [kg]	Weight (kg)
<b>D302</b>	1000	400

## BALE UNWINDER

INDEX: **D601**



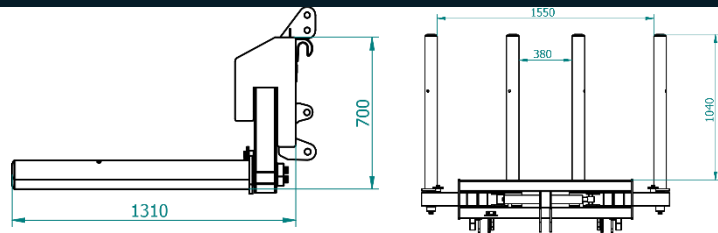
Nr. Art.	Capacity [kg]	Weight (kg)
<b>D601</b>	1000	180

### FEATURES

- **3 TEETH – 1200MM**

## HYDRAULIC BALE TRANSPORTER

INDEX: **D201**



Nr. Art.	Capacity [kg]	Weight (kg)
<b>D201</b>	1000	195

### FEATURES

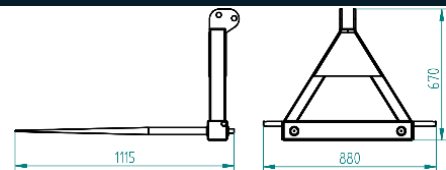
- **2 TEETH – 1200MM**

### OPTIONS

- **PRESSURE LIMITING VALVE (DHV) – 90 €**

## BALE FORK

INDEX: **D503**



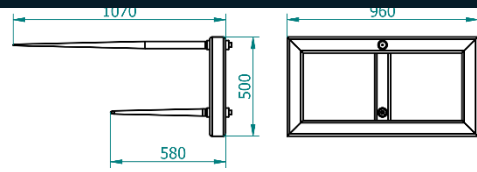
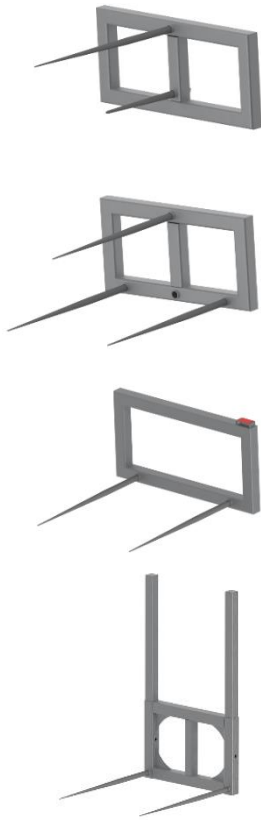
Nr. Art.	Capacity	Weight (kg)
<b>D503</b>	800	60

### FEATURES

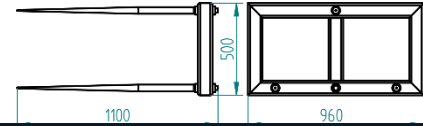
- **2 TEETH – 1100MM**
- **MOUNTING – 3 PUNKT KAT II**

## BALE FORK

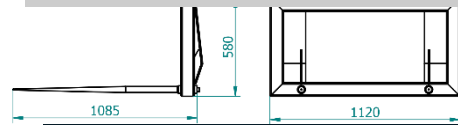
INDEX: **D502, D508, D510, D513**



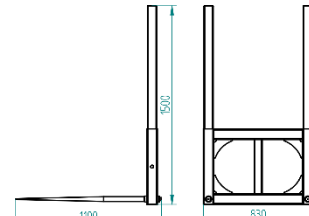
Nr. Art.	Capacity	Weight (kg)
<b>D508</b>	800	60



Nr. Art.	Capacity	Weight (kg)
<b>D510</b>	800	70



Nr. Art.	Capacity	Weight (kg)
<b>D502</b>	800	70



Nr. Art.	Capacity	Weight (kg)
<b>D513</b>	800	80

### FEATURES

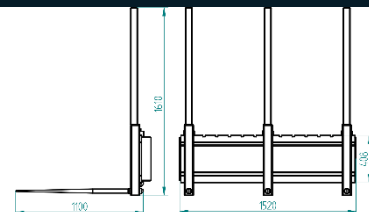
- **TEETH** – 600/810/1100MM

### OPTIONS

- INSERTABLE PROTECTIVE PROFILES
- ADDITIONAL TEETH
- DIFFERENT LENGTH
- TEETH PLACED ON TOP OF EACH OTHER

## STRAW BALE TRANSPORTER

INDEX: **D504**



Nr. Art.	Capacity	Weight (kg)
<b>D504</b>	1500	150

### FEATURES

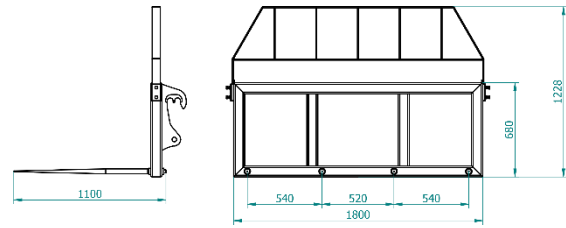
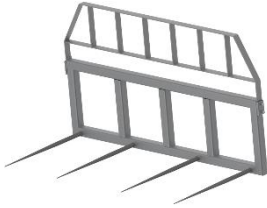
- **2 TEETH** – 1100MM
- **WORKING WIDTH** – 1500MM
- **INSERTABLE PROTECTIVE PROFILES**

### OPTIONS

- **ADDITIONAL ADJUSTABLE ELEMENT WITH TEETH** – 175 €
- **TEETH 1200MM** – 1200M

## STRAW BALE TRANSPORTER

INDEX: **D518**



### FEATURES

- **4 TEETH** – 1100MM
- **WORKING WIDTH** – 1800MM

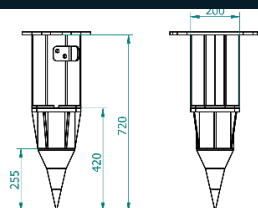
Nr. Art.	Capacity	Weight (kg)
<b>D518</b>	1500	180

### OPTIONS

- **TEETH**– 1200MM
- **BOLT-ON PROTECTIVE COVER** – 120 €

## HYDRAULIC WOOD SPLITTER

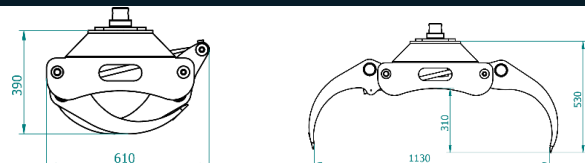
INDEX: **R217**



Nr. Art.	Weight (kg)	Version
<b>R217.001</b>	170	Fi 120MM
<b>R217.002</b>	250	Fi 170MM

## WOOD GRIPPER

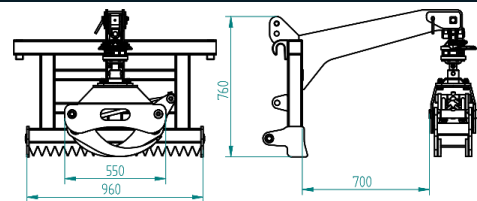
INDEX: **J309**



Nr. Art.	Capacity (kg)	Weight (kg)
<b>J309</b>	700	65

## WOOD GRIPPER

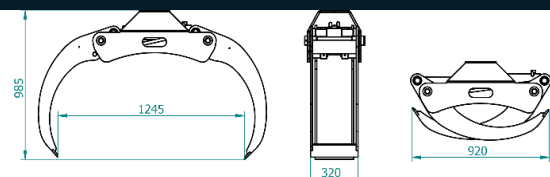
INDEX: **J308**



Nr. Art.	Capacity (kg)	Weight (kg)
<b>J308</b>	800	190

## WOOD GRIPPER

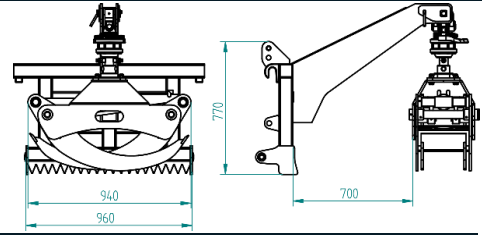
INDEX: **J311**



Nr. Art.	Capacity (kg)	Weight (kg)
<b>J311</b>	1000	180

**WOOD GRIPPER**

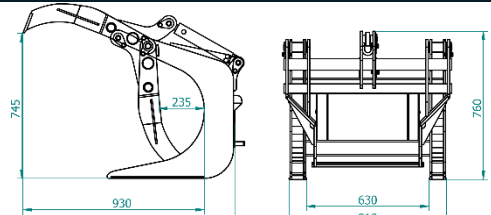
INDEX: **J310**



Nr. Art.	Capacity (kg)	Weight (kg)
<b>J310</b>	800	190

**WOOD GRIPPER MINI**

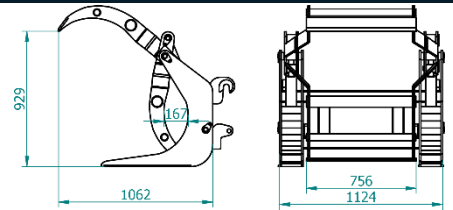
INDEX: **J206**



Nr. Art.	Capacity (kg)	Weight (kg)
<b>J206</b>	1000	150

**WOOD GRIPPER**

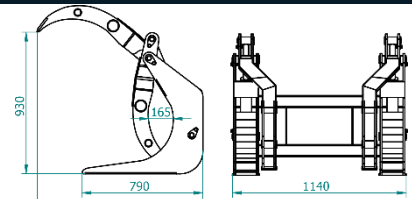
INDEX: **J202**



Nr. Art.	Capacity (kg)	Weight (kg)
<b>J202</b>	1000	220

**WOOD GRIPPER**

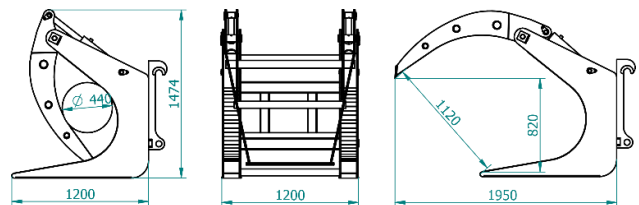
INDEX: **J204**



Nr. Art.	Capacity (kg)	Weight (kg)
<b>J204</b>	1000	220

**WOOD GRIPPER XL**

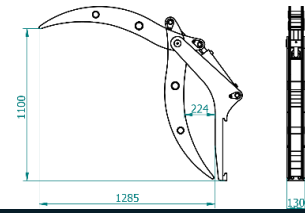
INDEX: **J207**



Nr. Art.	Capacity (kg)	Weight (kg)
<b>J207</b>	1500	510

## WOOD GRIPPER

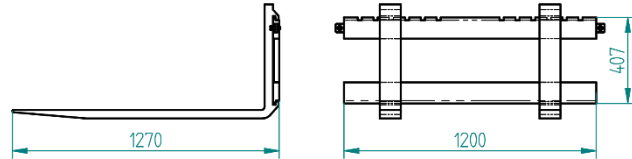
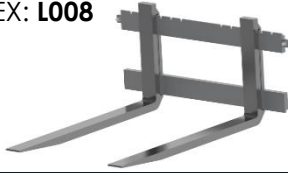
INDEX: **J102**



Nr. Art.	Capacity (kg)	Weight (kg)
<b>J102</b>	1000	66

## PALLET FORKS ISO FEM II

INDEX: **L008**



### FEATURES

- **TINE LENGTH** – 1200MM
- **GUIDE RAIL** – 1200MM
- **GUIDE RAIL MADE FROM ROD 30MM**

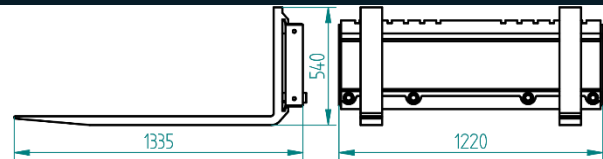
Nr. Art.	Capacity (kg)	Weight (kg)
<b>L008.160</b>	1600	145
<b>L008.200</b>	2000	160
<b>L008.250</b>	2500	195

### OPTIONS

- **BOLT-ON PROTECTIVE COVER** – 80€

## PALLET FORKS ISO FEM II

INDEX: **L007**



### FEATURES

- **TINE LENGTH** – 1200MM
- **GUIDE RAIL** – 1200MM
- **GUIDE RAIL BUILS AS BASE FRAME FROM PROFILE 80X80MM**
- **WITH 4PCS OF BUSHING FOR BALE**

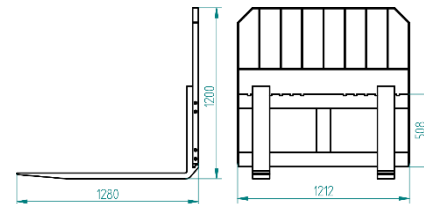
Nr. Art.	Capacity (kg)	Weight (kg)
<b>L007.160</b>	1600	145
<b>L007.200</b>	2000	160
<b>L007.250</b>	2500	195

### OPTIONS

- **BOLT-ON PROTECTIVE COVER** – 80€

## PALLET FORKS ISO FEM III

INDEX: **L011**



### FEATURES

- **TINE LENGTH** – 1200MM
- **GUIDE RAIL** – 1200MM
- **GUIDE RAIL MADE FROM ROD 40MM**

Nr. Art.	Capacity (kg)	Weight (kg)
<b>L011.350</b>	3500	230

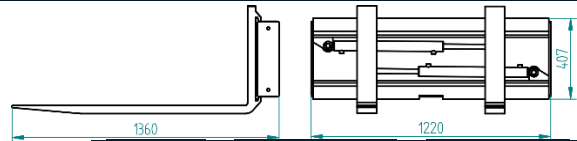
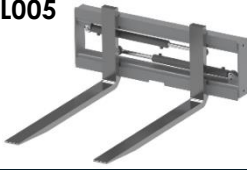
### OPTIONS

- **BOLT-ON PROTECTIVE COVER** – 180€



## PALLET FORKS ISO FEM II

INDEX: **L005**



### FEATURES

- **TINE LENGTH** – 1200MM
- **GUIDE RAIL** – 1200MM
- **GUIDE RAIL BUILS AS BASE FRAME FROM PROFILE 100X80MM**

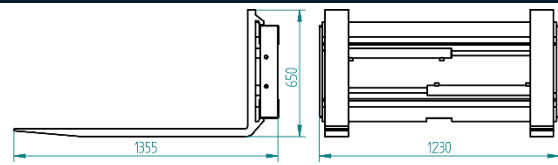
Nr. Art.	Capacity (kg)	Weight (kg)
<b>L005.160</b>	1600	200
<b>L005.200</b>	2000	220
<b>L005.250</b>	2500	250

### OPTIONS

- **BOLT-ON PROTECTIVE COVER** – 80€

## PALLET FORKS ISO FEM III

INDEX: **L018**



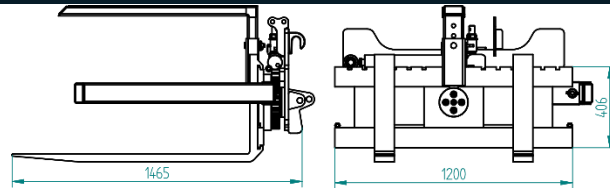
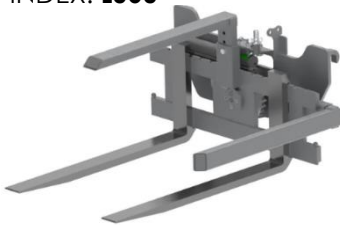
### FEATURES

- **TINE LENGTH** – 1200MM
- **GUIDE RAIL** – 1200MM
- **GUIDE RAIL BUILS AS BASE FRAME FROM PROFILE 100X100MM**

Nr. Art.	Capacity (kg)	Weight (kg)
<b>L018.350</b>	3500	300

## BOX ROTATOR

INDEX: **L060**



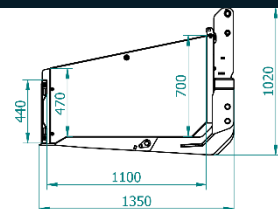
### FEATURES

- **TINE LENGTH** – 1200MM
- **GUIDE RAIL** – 1200MM
- **SIDE AND MIDDLE FOLDING ARM**

Nr. Art.	Capacity (kg)	Weight (kg)
<b>L060.200</b>	2000	250

## TRANSPORT BOX

INDEX: **K101**



### FEATURES

- **COVER** – 3MM
- **SIDE** – 3MM
- **CUTTING EDGE** – HB500/110X12MM

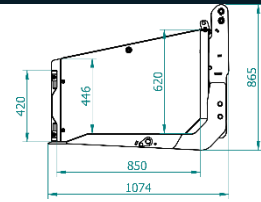
Nr. Art.	Width (mm)	Weight (kg)	Capacity (m3)
<b>K101.150</b>	1500	320	0,98
<b>K101.180</b>	1800	340	1,17
<b>K101.200</b>	2000	355	1,30
<b>K101.220</b>	2200	370	1,43
<b>K101.240</b>	2400	390	1,56

### OPTIONS

- **HYDRAULIC DUMP** – 690 €

## TRANSPORT BOX MINI

INDEX: **K102**



### FEATURES

- **COVER** – 2,5MM
- **SIDE** – 2,5MM
- **CUTTING EDGE** – HB500/110X12MM

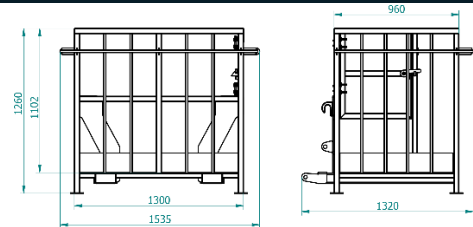
### OPTIONS

- **HYDRAULIC DUMP** – 690 €

Nr. Art.	Width (mm)	Weight (kg)	Capacity (m3)
<b>K102.130</b>	1300	205	0,59
<b>K102.150</b>	1500	215	0,68
<b>K102.180</b>	1800	225	0,81
<b>K102.200</b>	2000	235	0,90
<b>K102.220</b>	2200	245	0,99

## TOOL PLATFORM

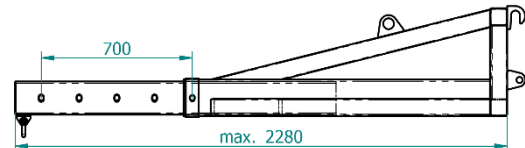
INDEX: **L051**



Nr. Art.	Width (mm)	Weight (kg)
<b>L051.130</b>	1300	150
<b>L051.230</b>	2300	190

## LOAD HOOK

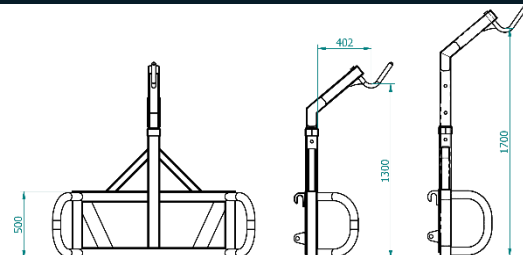
INDEX: **E701**



Nr. Art.	Width (mm)	Weight (kg)
<b>E701</b>	1580-2280	200

## BIGBAG LIFTER

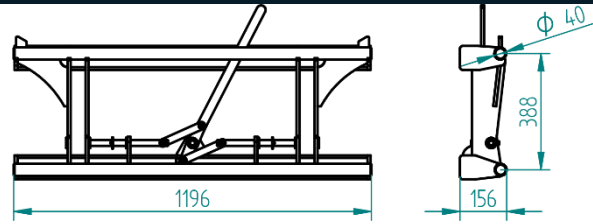
INDEX: **E702**



Nr. Art.	Width (mm)	Weight (kg)
<b>E702</b>	1300/1500/1700	100

**ADAPTER EURO**

INDEX: **R107**



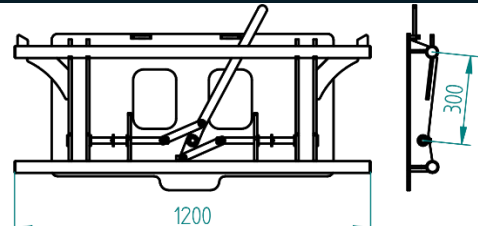
**OPTIONS**

- MINILOADER ATTACHMENT – PLATE
- MINILOADER ATTACHMENT – HOOKS
- LOADER ATTACHMENT
- **HYDRAULIC LOCKING** – 250€

Nr. Art.	Weight (kg)
<b>R107.001</b>	120
<b>R107.002</b>	130
<b>R107.003</b>	150

**ADAPTER EURO LIGHT**

INDEX: **R117**



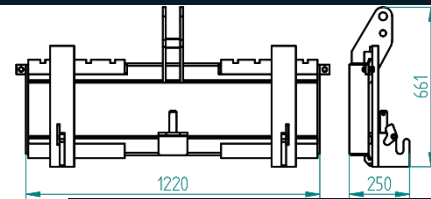
**OPTIONS**

- MINILOADER ATTACHMENT – PLATE
- MINILOADER ATTACHMENT – HOOKS
- **HYDRAULIC LOCKING** – 250€

Nr. Art.	Weight (kg)
<b>R117.001</b>	80
<b>R117.002</b>	85

**ADJUSTABLE ADAPTER**

INDEX: **R120**



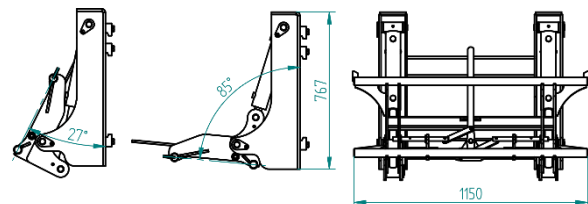
**AVAILABLE MOUNTING SET**

- EURO – 3 PUNKT KAT II
- MINILOADER PLATE – 3 PUNKT KAT II
- MINILOADER HOOKS – 3 PUNKT KAT II
- LOADER – 3 PUNKT II

Nr. Art.	Weight (kg)
<b>R120.001</b>	90
<b>R120.002</b>	110
<b>R120.003</b>	115
<b>R120.004</b>	140

**ADAPTER FOR FORKLIFT ISO FEM II / ISO FEM III**

INDEX: **R213**



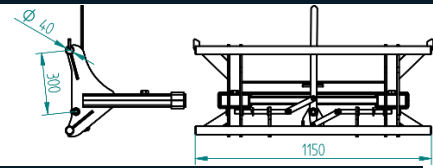
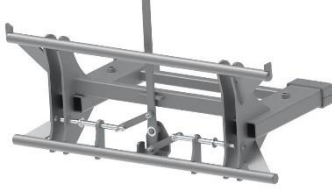
**OPTIONS**

- **HYDRAULIC LOCKING** – 250€

Nr. Art.	Weight (kg)
<b>R213.001</b>	200

## ADAPTER FORKLIFT - EURO

INDEX: R111



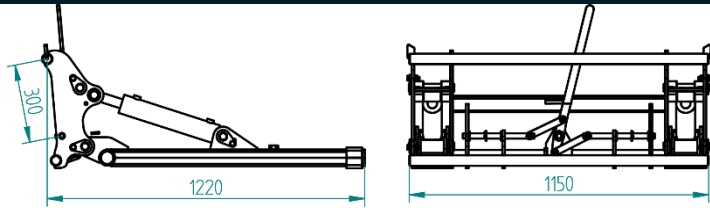
Nr. Art.	Weight (kg)
R111	85

### OPTIONS

- HYDRAULIC LOCKING – 250€
- LOADER ATTACHMENT

## ADAPTER FORKLIFT – EURO

INDEX: R110



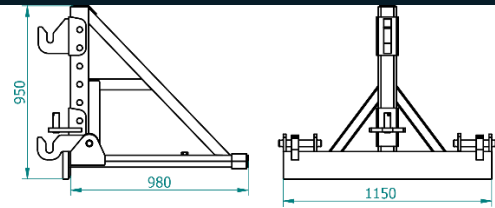
Nr. Art.	Weight (kg)
R110	150

### OPTIONS

- HYDRAULIC LOCKING – 250€
- LOADER ATTACHMENT

## MACHINE LIFTER – TUZ II / III

INDEX: R132



Nr. Art.	Weight (kg)	Capacity (kg)
R132	155	1500

## FORKLIFT BUCKET

INDEX: R116



Nr. Art.	Weight (kg)	Version
R116.001	65	1 hydraulic cylinder
R116.002	95	2 hydraulic cylinders

## WELDED ATTACHMENTS

INDEX: R100



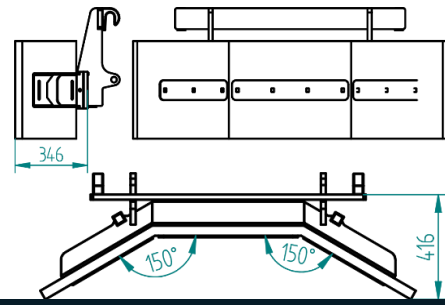
Nr. Art.	Weight (kg)	Version
R100.001	30	Loader type Avant
R100.002	40	EURO
R100.003	45	Loader PLATE
R100.004	70	Loader HOOKS
R100.005	90	Loader

### FEATURES

- PLATE 10/12MM

## RUBBER SHIELD

INDEX: E101



### FEATURES

- RUBBER HEIGHT – 450MM
- RUBBER WIDTH – 40MM

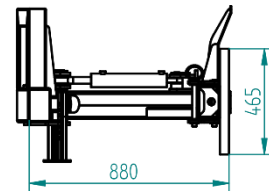
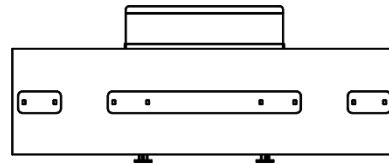
### OPTIONS

- FOLDABLE SIDE PART – 125€

Nr. Art.	Width (mm)	Weight (kg)
E101.150	1500	150
E101.170	1700	155
E101.200	2000	160
E101.220	2200	170
E101.240	2400	180
E101.260	2600	190
E101.300	3000	210

## HYDRAULIC RUBBER SHIELD

INDEX: E100



### FEATURES

- RUBBER HEIGHT – 450MM
- RUBBER WIDTH – 40MM
- ADJUSTABLE ANGLE 55 DEGREES
- FOLDABLE SIDE PART 0 – 30 DEGREES

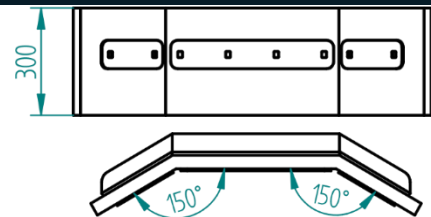
### OPTIONS

- HEIGHT LEVEL ADJUSTMENT / GROUND ADAPTATION – 160€

Nr. Art.	Width (mm)	Weight (kg)
E100.150	1500	190
E100.170	1700	210
E100.200	2000	230
E100.220	2200	245
E100.240	2400	260
E100.260	2600	275
E100.300	3000	300

## RUBBER SHIELD MINI

INDEX: E103



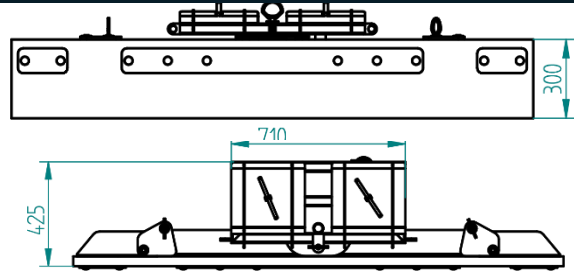
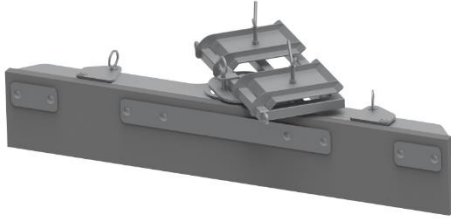
### FEATURES

- RUBBER HEIGHT – 300MM
- RUBBER WIDTH – 40MM

Nr. Art.	Width (mm)	Weight (kg)
E103.100	1000	110
E103.120	1200	120
E103.150	1500	130
E103.170	1700	140
E103.200	2000	150

## RUBBER SHIELD MOUNTED ON BUCKET

INDEX: **E112**



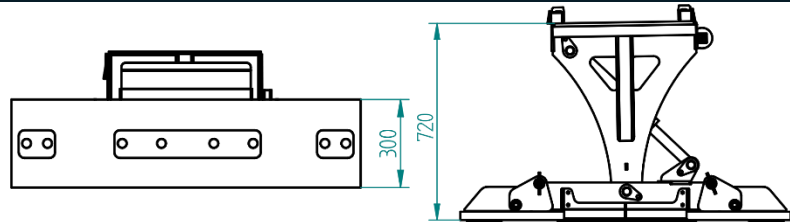
### FEATURES

- **RUBBER HEIGHT** – 300MM
- **RUBBER WIDTH** – 40MM
- **MECHANICAL ANGLE ADJUSTMENT**

Nr. Art.	Width (mm)	Weight (kg)
E112.150	1500	190
E112.170	1700	210
E112.200	2000	230
E112.220	2200	245
E112.240	2400	260
E112.260	2600	275
E112.300	3000	300

## RUBBER SHIELD MULTI MINI

INDEX: **E107**



### FEATURES

- **RUBBER HEIGHT** – 450MM
- **RUBBER WIDTH** – 40MM
- **ANGLE ADJUSTMENT** 0-30 DEGREES
- **FOLDABLE SIDE PART 0** – 35 DEGREES
- **HYDRAULIC FOLDABLE SIDE PART 0** – 35 DEGREES

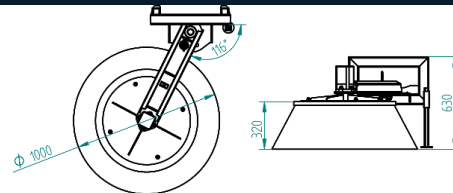
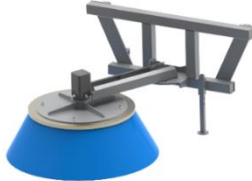
Nr. Art.	Width (mm)	Weight (kg)
E107.120	1500	150
E107.150	1500	150
E107.170	1700	170
E107.200	2000	190
E107.220	2200	210

### OPTIONS

- **HYDRAULIC SIDE PART ADJUSTMENT** – 280 €

## CLEANING BRUSH

INDEX: **E504**



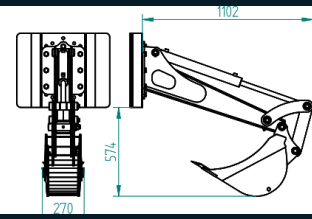
### FEATURES

- **BRUSH FI 700/1000MM**

Nr. Art.	Weight [kg]	Version
E504	110	Standard

## DIGGING ARM

INDEX: **R201**



### FEATURES

- **BUCKET – 250MM**

Nr. Art.

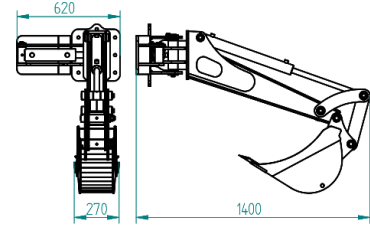
**R201**

Weight (kg)

110

## DIGGING ARM - TURNABLE

INDEX: **R203**



### FEATURES

- **BUCKET – 250MM**

Nr. Art.

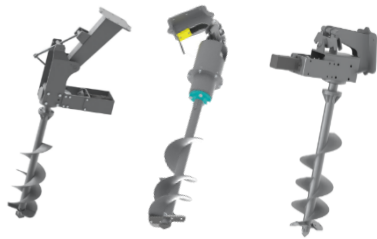
**R203**

Weight (kg)

190

## EARTHDRILL

INDEX: **R204/R216/R207**



Nr. Art.	Weight (kg)	Version
<b>R216.001</b>	170	Motor drive
<b>R204.001</b>	180	Gearbox
<b>R207.001</b>	200	Gearbox with motor drive

### FEATURES

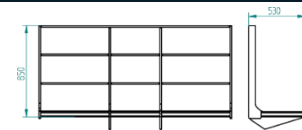
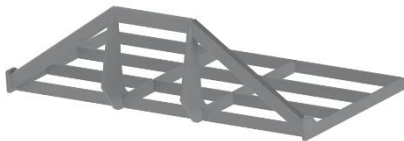
- **DRILL – Ø 300MM**

### OPTIONS

- **DRILL – Ø 150/200/250MM – 835 €**

## GRADER

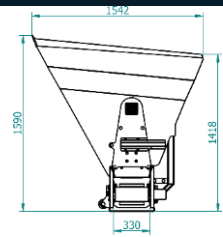
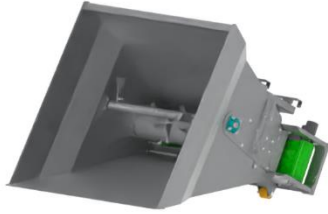
INDEX: **E401**



Nr. Art.	Capacity	Weight (kg)
<b>E401.120</b>	1200	85
<b>E401.150</b>	1500	95
<b>E401.180</b>	1800	105
<b>E401.200</b>	2000	120
<b>E401.240</b>	2400	150

## BEDDING BUCKET

INDEX: **A901**



### DESCRIPTION

- BEEDING WITH CHOPPED STRAW OR LOOSE MATERIALS
- SPEED REGULATION OF SHAFTS AND BELTS

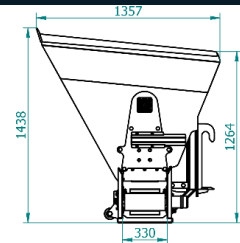
Nr. Art.	Width (mm)	Weight (kg)	Capacity (m <sup>3</sup> )
<b>A901.120</b>	1150	400	1,26
<b>A901.130</b>	1300	420	1,43
<b>A901.150</b>	1550	450	1,71
<b>A901.180</b>	1800	510	1,98
<b>A901.200</b>	2000	550	2,20

### OPTIONS

- SCREW-ON COVERS

## BEDDING BUCKET MINI

INDEX: **A902**



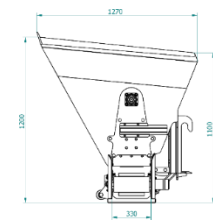
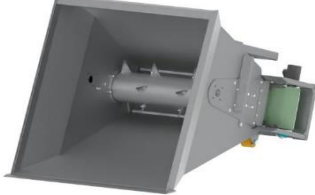
### DESCRIPTION

- BEEDING WITH CHOPPED STRAW OR LOOSE MATERIALS
- SPEED REGULATION OF SHAFTS AND BELTS

Nr. Art.	Width (mm)	Weight (kg)	Capacity (m <sup>3</sup> )
<b>A902.120</b>	1150	350	0,92
<b>A902.130</b>	1300	370	1,04
<b>A902.150</b>	1550	400	1,24
<b>A902.180</b>	1800	440	1,44

## BEDDING BUCKET MINI MINI

INDEX: **A907**



### DESCRIPTION

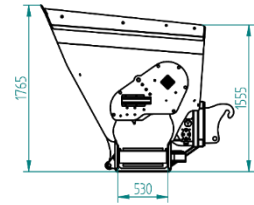
- BEEDING WITH CHOPPED STRAW OR LOOSE MATERIALS
- SPEED REGULATION OF SHAFTS AND BELTS

Nr. Art.	Width (mm)	Weight (kg)	Capacity (m <sup>3</sup> )
<b>A907.120</b>	1200	300	0,80
<b>A907.140</b>	1400	320	0,90
<b>A907.160</b>	1600	350	1,00

### OPTIONS

- DIRECTION CHANGING VALVE – 690 €
- ADDITIONAL ROLLER TO DECREASE HANGING OF THE MATERIAL



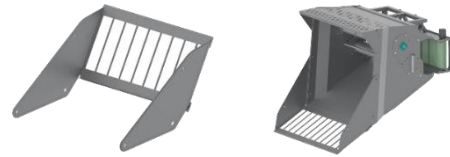
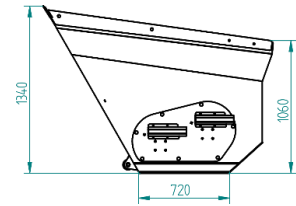
**BEDDING / FEEDING BUCKET**INDEX: **A904****DESCRIPTION**

- BEEDING WITH CHOPPED STRAW OR LOOSE MATERIALS
- SPEED REGULATION OF SHAFTS AND BELTS

**OPTIONS**

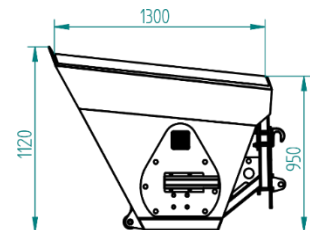
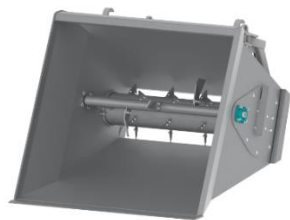
- DIRECTION CHANGING VALVE – 690 €
- SCREW-ON COVERS

Nr. Art.	Width (mm)	Weight (kg)	Capacity (m3)
<b>A904.120</b>	1150	450	1,54
<b>A904.130</b>	1300	490	1,75
<b>A904.150</b>	1550	540	2,10
<b>A904.180</b>	1800	590	2,45
<b>A904.200</b>	2000	650	2,73

**BEDDING BUCKET**INDEX: **A905****DESCRIPTION**

- BEEDING WITH CHOPPED STRAW OR LOOSE MATERIALS
- SPEED REGULATION OF SHAFTS AND BELTS

Nr. Art.	Width (mm)	Weight (kg)	Capacity (m3)
<b>A905.120</b>	1150	400	1,54
<b>A905.130</b>	1300	420	1,75
<b>A905.150</b>	1550	450	2,10
<b>A905.180</b>	1800	510	2,45
<b>A906.200</b>	2000	550	2,73

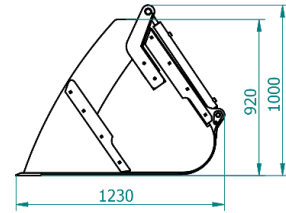
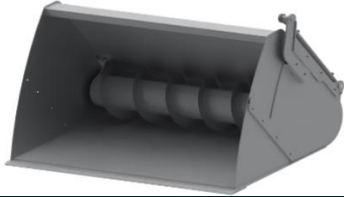
**BEDDING BUCKET**INDEX: **A906****DESCRIPTION**

- BEEDING WITH CHOPPED STRAW OR LOOSE MATERIALS
- SPEED REGULATION OF SHAFTS AND BELTS

Nr. Art.	Width (mm)	Weight (kg)	Capacity (m3)
<b>A906.120</b>	1150	350	1,26
<b>A906.130</b>	1300	370	1,43
<b>A906.150</b>	1550	400	1,71
<b>A906.180</b>	1800	450	1,98
<b>A906.200</b>	2000	500	2,20

## FEEDING BUCKET WITH AUGER – ONE SIDE

INDEX: **A607**



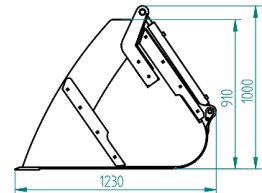
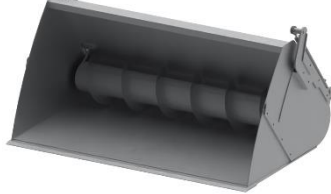
### DESCRIPTION

- ONLY FOR GRANULAR / POWDER FEED

Nr. Art.	Width (mm)	Weight (kg)	Capacity (m3)
<b>A607.120</b>	1200	390	0,66
<b>A607.140</b>	1400	410	0,77
<b>A607.160</b>	1600	430	0,88
<b>A607.180</b>	1800	450	0,99
<b>A607.200</b>	2000	470	1,10
<b>A607.220</b>	2200	490	1,21
<b>A607.240</b>	2400	510	1,32

## FEEDING BUCKET WITH AUGER – TWO SIDE

INDEX: **A606**



### DESCRIPTION

- ONLY FOR GRANULAR / POWDER FEED

### OPTIONS

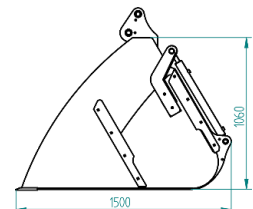
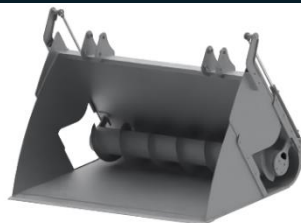
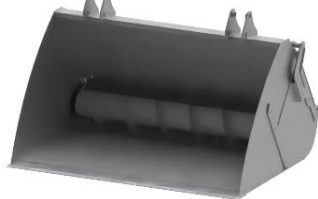
- HYDRAULIC MILL



Nr. Art.	Width (mm)	Weight (kg)	Capacity (m3)
<b>A606.120</b>	1200	410	0,66
<b>A606.140</b>	1400	430	0,77
<b>A606.160</b>	1600	460	0,88
<b>A606.180</b>	1800	480	0,99
<b>A606.200</b>	2000	500	1,10
<b>A606.220</b>	2200	510	1,21
<b>A606.240</b>	2400	530	1,32

## FEEDING BUCKET WITH AUGER XL – TWO SIDE

INDEX: **A604**

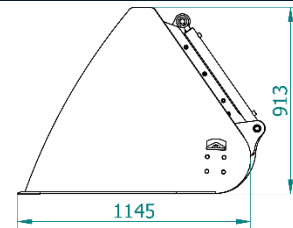
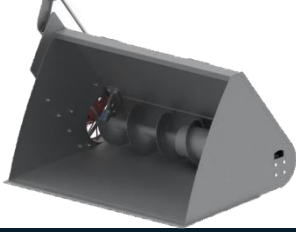


### DESCRIPTION

- ONLY FOR GRANULAR / POWDER FEED AND SHORT GRASS

Nr. Art.	Width (mm)	Weight (kg)	Capacity (m3)
<b>A604.160</b>	1600	520	1,36
<b>A604.180</b>	1800	570	1,53
<b>A604.200</b>	2000	590	1,70
<b>A604.220</b>	2200	620	1,87
<b>A604.230</b>	2300	640	1,96
<b>A604.240</b>	2400	660	2,04

**FEEDING BUCKET PLUS**

 INDEX: **A613**

**DESCRIPTION**

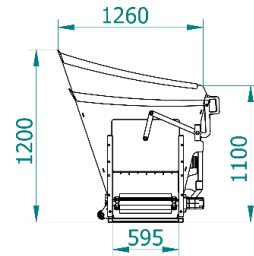
- FOR CUTTING POTATOES AND BEETROOT

**OPTIONS**

- **CUTTING MODULE** – 1070 €

Nr. Art.	Width (mm)	Weight (kg)	Capacity (m3)
<b>A613.120</b>	1200	390	0,66
<b>A613.140</b>	1400	410	0,77
<b>A613.160</b>	1600	430	0,88
<b>A613.180</b>	1800	450	0,99
<b>A613.200</b>	2000	470	1,10
<b>A613.220</b>	2200	490	1,21
<b>A613.240</b>	2400	510	1,32

**FEEDING BUCKET WITH BELT MINI**

 INDEX: **A611**

**DESCRIPTION**

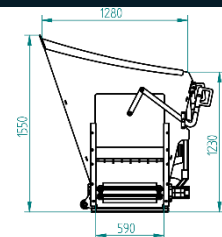
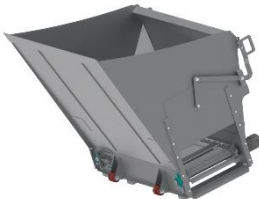
- ONLY FOR GRANULAR / POWDER FEED AND SHORT GRASS

Nr. Art.	Width (mm)	Weight (kg)	Capacity (m3)
<b>A611.120</b>	1220	300	1,10
<b>A611.150</b>	1520	350	1,30

**OPTIONS**

- **HYDRAULIC SLIDING FLAP** – 760 €
- **MILLING MACHINE IN TOP OF CHAIN**– 1095 €

**FEEDING BUCKET WITH BELT**

 INDEX: **A605**

**DESCRIPTION**

- ONLY FOR GRANULAR / POWDER FEED AND SHORT GRASS

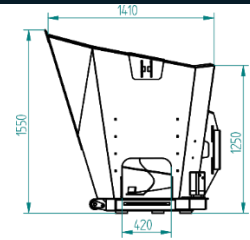
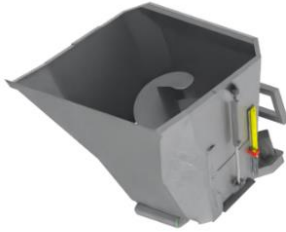
Nr. Art.	Width (mm)	Weight (kg)	Capacity (m3)
<b>A605.120</b>	1220	450	1,22
<b>A605.150</b>	1520	510	1,52
<b>A605.180</b>	1820	590	1,82
<b>A605.200</b>	2020	650	2,00

**OPTIONS**

- **HYDRAULIC SLIDING FLAP** – 760 €
- **MILLING MACHINE IN TOP OF CHAIN**– 1095 €

## FEED MIXER

INDEX: P302



Nr. Art.	Width (mm)	Weight (kg)	Capacity (m3)
P302.150	1520	520	1,50
P302.220	2360	750	2,50

### OPTIONS

- HYDRAULIC MILL

## FEEDING BUCKET

INDEX: A610



### FEATURES

- HYDRAULIC MILL

Nr. Art.	Width (mm)	Weight (kg)	Capacity (m3)
A610.120	1200	500	1,0
A610.150	1500	600	1,20
A610.180	1800	650	1,50
A610.200	2000	700	1,70
A610.220	2200	750	1,90

## SPECIAL OPTIONS FOR FEEDING BUCKET

INDEX: D,F,FH



D



F

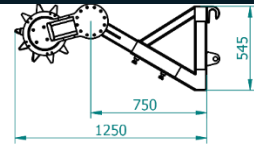


FH

Nr. Art.	Width (mm)	Nr. Art.	Width (mm)	Nr. Art.	Width (mm)
D.120	1200	F.120	1200	FH.120	1200
D.140	1400	F.140	1400	FH.140	1400
D.150	1500	F.150	1500	FH.150	1500
D.160	1600	F.160	1600	FH.160	1600
D.180	1800	F.180	1800	FH.180	1800
D.200	2000	F.200	2000	FH.200	2000
D.220	2200	F.220	2200	FH.220	2200
D.240	2400	F.240	2400	FH.240	2400

## SILAGE CUTTER

INDEX: **A603**



### FEATURES

- BOLT-ON CUTTING KNIVES

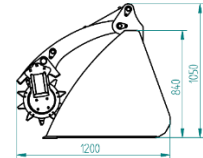
### OPTIONS

- ADDITIONAL HYDRAULIC MOTOR – 400 €

Nr. Art.	Width (mm)	Weight (kg)
<b>A603.120</b>	1200	160
<b>A603.140</b>	1400	180
<b>A603.160</b>	1600	190
<b>A603.180</b>	1800	200
<b>A603.200</b>	2000	210
<b>A603.220</b>	2200	230
<b>A603.240</b>	2400	250

## BUCKET WITH HYDRAULIC CUTTER

INDEX: **A608**



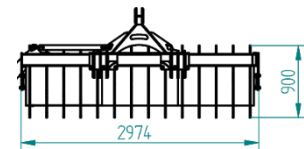
### DESCRIPTION

- HYDRAULIC MILL

Nr. Art.	Width (mm)	Weight (kg)	Capacity (m3)
<b>A608.120</b>	1200	340	0,54
<b>A608.140</b>	1400	360	0,63
<b>A608.160</b>	1600	380	0,72
<b>A608.180</b>	1800	400	0,81
<b>A608.200</b>	2000	420	0,90
<b>A608.220</b>	2200	440	0,99
<b>A608.240</b>	2400	460	1,08

## SILLAGE ROLLER / CAMPBELL ROLLER

INDEX: **E902**



### FEATURES

- ROLLER DIAMETER 900MM

### OPTIONS

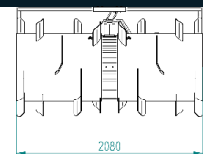
- STRENGTHENING ARM – 2360€
- HYDRAULIC SIDE SHIFT- 1525€



Nr. Art.	Width (mm)	Weight (kg)
<b>E902.250</b>	2500	1500
<b>E902.300</b>	3000	1700

## SILLAGE ROLLER - FRONT

INDEX: **E904**



### FEATURES

- ROLLER DIAMETER 1140MM

Nr. Art.	Width (mm)	Weight (kg)
<b>E904.200</b>	2000	730
<b>E904.250</b>	2500	900

**FEEDING AUGER**

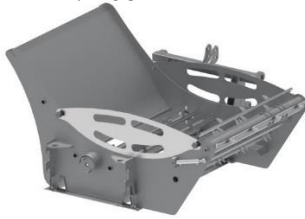
 INDEX: **E802**

**OPTIONS**

- **ADDITIONAL FEED CONTAINER** – 1475 €

Nr. Art.	Width (mm)	Weight (kg)
<b>E802.150</b>	1500	260

**BALE UNROLLER**

 INDEX: **D604**


Nr. Art.	Width (mm)	Weight (kg)
<b>D604</b>	1500	450

**DESCRIPTION**

- SILAGE BALE FEEDING
- STRAW BALE SPREADING
- UNROLLING SPEED CONTROL

**OPTIONS**

- **BEEDING ROTOR** – 1285€


**BALE UNROLLER**

 INDEX: **D602**


Nr. Art.	Width (mm)	Weight (kg)
<b>D602</b>	1500	750

**DESCRIPTION**

- SILAGE BALE FEEDING
- STRAW BALE SPREADING
- UNROLLING SPEED CONTROL

**BALE WRAPPER**

 INDEX: **D701**


Nr. Art.	Weight [kg]	Version
<b>D701</b>	480	Standard
<b>D701</b>	550	With bale gripper

**FEATURES**

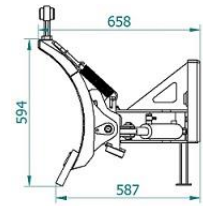
- **MAX BALE DIAMETER** – 1300MM
- **WIDE FILM WIDTH** – 1250MM
- **MAX BALE WEIGHT** – 100KG
- **FILM FEEDER** 500/750MM
- **WRAPPING TIME** – 120 SEC
- **RECOMMENDED POWER** - 38HP

**OPTIONS**

- **VERSION WITH BALE GRIPPER** – 450€

## SNOW PLOW MINI

INDEX: **G103**



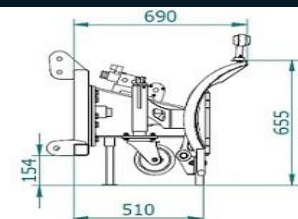
### FEATURES

- HYDRAULIC TURNING ANGLE - 25 DEGREES

Nr. Art.	Width (mm)	Weight (kg)	Mocowanie
<b>G103.120</b>	1200	120	Triangle com.
<b>G103.150</b>	1500	130	Triangle com.
<b>G103.180</b>	1800	140	Triangle com.
<b>G103.200</b>	2000	150	Triangle com.

## SNOW PLOW MINI VARIO / V SYSTEM

INDEX: **G102**



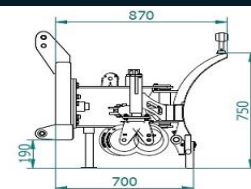
### FEATURES

- HYDRAULIC TURNING ANGLE - 30 DEGREES

Nr. Art.	Width (mm)	Weight (kg)	Mocowanie
<b>G102.130</b>	1300	140	Triangle com.
<b>G102.150</b>	1500	160	Triangle com.
<b>G102.180</b>	1800	175	Triangle com.
<b>G102.200</b>	2000	190	Triangle com.

## SNOW PLOW ECO

INDEX: **G204**



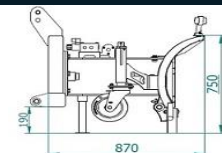
### FEATURES

- HYDRAULIC TURNING ANGLE - 30 DEGREES

Nr. Art.	Width (mm)	Weight (kg)	Mocowanie
<b>G204.150</b>	150	200	3 Punkt Kat I
<b>G204.180</b>	180	220	3 Punkt Kat I
<b>G204.200</b>	200	240	3 Punkt Kat I
<b>G204.220</b>	220	260	3 Punkt Kat I

## SNOW PLOW ECO VARIO / V SYSTEM

INDEX: **G205**



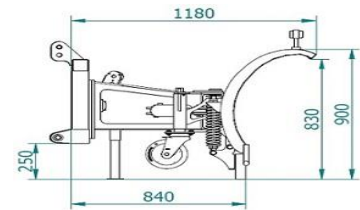
### FEATURES

- HYDRAULIC TURNING ANGLE - 30 DEGREES

Nr. Art.	Width (mm)	Weight (kg)	Mocowanie
<b>G205.150</b>	1500	220	3 Punkt Kat I
<b>G205.180</b>	1800	240	3 Punkt Kat I
<b>G205.200</b>	2000	260	3 Punkt Kat I
<b>G205.220</b>	2200	280	3 Punkt Kat I

## SNOW PLOW UNIVERSAL

INDEX: **G304**



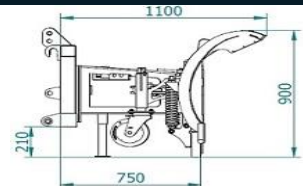
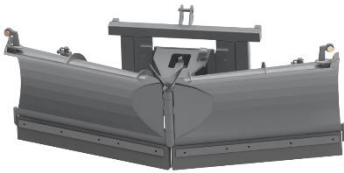
### FEATURES

- HYDRAULIC TURNING ANGLE – 30 DEGREES

Nr. Art.	Width (mm)	Weight (kg)	Mocowanie
<b>G304.220</b>	220	400	3 Punkt Kat II
<b>G304.250</b>	250	420	3 Punkt Kat II
<b>G304.270</b>	270	470	3 Punkt Kat II
<b>G304.300</b>	300	520	3 Punkt Kat II
<b>G304.330</b>	330	570	3 Punkt Kat II

## SNOW PLOW UNIVERSAL VARIO / V SYSTEM

INDEX: **G305**



### FEATURES

- HYDRAULIC TURNING ANGLE – 30 DEGREES

Nr. Art.	Width (mm)	Weight (kg)	Mocowanie
<b>G305.220</b>	220	430	3 Punkt Kat II
<b>G305.250</b>	250	490	3 Punkt Kat II
<b>G305.270</b>	270	510	3 Punkt Kat II
<b>G305.300</b>	300	540	3 Punkt Kat II
<b>G305.330</b>	330	590	3 Punkt Kat II

## SNOW PLOW HEIGHT ADJUSTMENT ATTACHMENT

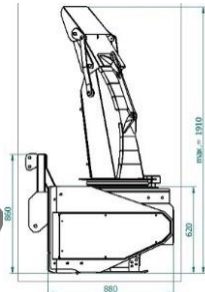
INDEX: **G111/G211/G311**



Nr. Art.	Version
<b>G111</b>	Mini
<b>G211</b>	Eco
<b>G311</b>	Universal

## ROTARY SNOW PLOW

INDEX: **G1203**



Nr. Art.	Width rob.(mm)	Weight (kg)	Mocowanie
<b>G1203.120</b>	1200	380	Euro
<b>G1203.150</b>	1500	420	Euro
<b>G1203.180</b>	1800	550	Euro
<b>G1203.200</b>	2000	620	Euro

### OPTIONS

- HYDRAULIC DRIVE – 1000 €



## STANDARD EQUIPMENT FOR ALL SNOW PLOWS

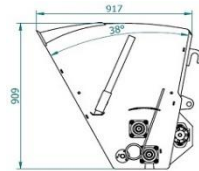
- CUTTING EDGE WORKING ON SPRINGS
- LEVEL ADJUSTMENT / GROUND ADJUSTMENT
- HYDRAULIC SIDE PANELS

## SNOW PLOW OPTIONS

- SUPPORT WHEELS 160/50 – 250€
- SUPPORT WHEELS 200/50 – 320€
- SKIDS – 140€
- LED LIGHTS – 90€
- CUTTING EDGE HB500/150X16MM, L=1000MM – 115€
- CUTTING EDGE – PPN POLIURETAN 150X20MM, L=1000MM – 170€
- FRAME WITHOUT MOUNTING - 215€ / MINILOADER - 400€ / TELESCOPIC - 475€ / KOMBI 345€
- HYDRAULIC OVERLOAD PROTECTION SYSTEM - 605€

## SALT / SAND SPREADER

INDEX: **E601**



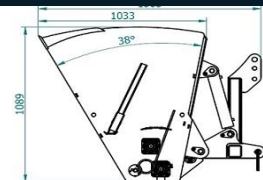
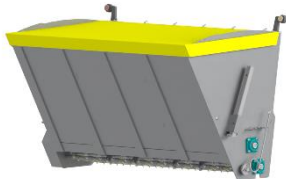
### OPTIONS

- TUZ TRACTOR MOUNTING WITH HYDRAULIC SYSTEM – 880€

Nr. Art.	Width rob.(mm)	Weight (kg)	Capacity (m3)	Mocowanie
<b>E601.120</b>	1200	300	0,54	Euro
<b>E601.140</b>	1400	340	0,63	Euro
<b>E601.160</b>	1600	360	0,72	Euro
<b>E601.180</b>	1800	390	0,83	Euro
<b>E601.200</b>	2000	410	0,90	Euro
<b>E601.220</b>	2200	430	0,99	Euro

## SALT / SAND SPREADER XL

INDEX: **E605**



### OPTIONS

- TUZ TRACTOR MOUNTING WITH HYDRAULIC SYSTEM – 880€

Nr. Art.	Width rob.(mm)	Weight (kg)	Capacity (m3)	Mocowanie
<b>E605.140</b>	1400	480	0,91	Euro
<b>E605.160</b>	1600	510	1,04	Euro
<b>E605.180</b>	1800	550	1,19	Euro
<b>E605.200</b>	2000	590	1,30	Euro
<b>E605.220</b>	2200	630	1,30	Euro
<b>E605.240</b>	2400	650	1,56	Euro

## BROOM WEED MACHINE

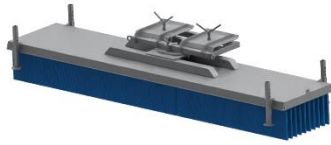
INDEX: **E502**



Nr. Art.	Średnica szczotki (mm)	Weight (kg)
<b>E502</b>	500	200

## STRIP BROOM

INDEX: **E501**



Nr. Art.	Width (mm)	Weight (kg)
<b>E501.150</b>	1500	120
<b>E501.200</b>	2000	140
<b>E501.250</b>	2500	160
<b>E501.300</b>	3000	180

### FEATURES

- 10 ROWS OF BRUSHES

### OPTIONS

- MOUNTING EURO / LOADER / MINILOADER

## CONCRETE MIXER – PTO - 800L

INDEX: **I101**



Nr. Art.	Width (mm)	Height(mm)	Weight (kg)
<b>I101</b>	1550	1250	520

### OPTIONS

- ADDITIONAL MOUNTED HYDRAULIC MOTOR – 1000 €

## HYDRAULIC CONCRETE MIXER – 800L

INDEX: **I102**



Nr. Art.	Width (mm)	Height(mm)	Weight (kg)
<b>I102</b>	1550	1250	550

### DESCRIPTION

- WITH HYDRAULIC MOTOR

## CONCRETE MIXER WITH SELF LOADING BUCKET – 800L

INDEX: **I103**



Nr. Art.	Width (mm)	Height(mm)	Weight (kg)
<b>I103.W</b>	1550	1250	720
<b>I103.H</b>	1550	1250	750

## CONCRETE MIXER – PTO - 1200L

INDEX: **I104**



Nr. Art.	Width (mm)	Height(mm)	Weight (kg)
<b>I104</b>	1900	1250	810

### OPTIONS

- ADDITIONAL MOUNTED HYDRAULIC MOTOR – 1000 €

## HYDRAULIC CONCRETE MIXER – 1200L

INDEX: **I105**



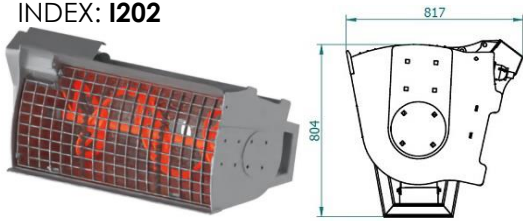
Nr. Art.	Width (mm)	Height(mm)	Weight (kg)
<b>I105</b>	1900	1250	840

### DESCRIPTION

- WITH HYDRAULIC MOTOR

## BETONMIXER

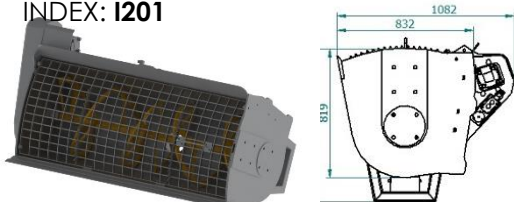
INDEX: I202



Nr. Art.	Width(mm)	Capacity (m3)	Weight (kg)
I202.100	1000	0,26	290
I202.120	1200	0,31	310
I202.140	1400	0,36	340
I202.160	1600	0,42	380

## BETONMIXER

INDEX: I201



Nr. Art.	Width (mm)	Capacity (m3)	Weight (kg)
I201.120	1200	0,60	510
I201.140	1400	0,70	560
I201.160	1600	0,80	600
I201.180	1800	0,90	660
I201.200	2000	1,00	700
I201.220	2200	1,10	740

### OPTIONS

- SIDE DUMPING

## RIDING ARENA GRADER

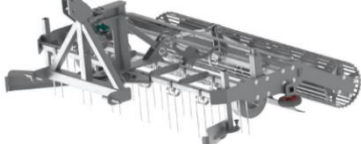
INDEX: W101



Nr. Art.	Width [mm]	Weight [kg]
W101.150	1500	170
W101.200	2000	210
W101.240	2400	250

## RIDING ARENA GRADER PRO

INDEX: W103



Nr. Art.	Width [mm]	Weight [kg]
W103.160	1600	260
W103.200	2000	290
W103.245	2450	320

## DISC HARROW

INDEX: F105



### FEATURES

- TWO ROWS OF DISCS - 560MM
- RUBBER SHOCK ABSORBERS
- TUBULAR ROLLER
- SPACE BETWEEN SETS OF DISCS - 1000MM

Nr. Art.	Width [mm]	Weight [kg]	Discs [pcs]
F105	2500	1200	20
F105	2700	1300	22
F105	3000	1400	24

### OPTIONS

- ADJUSTABLE HYDRAULIC ROLLER HEIGHT
- PREMIUM HUB - 680 €
- ADJUSTABLE SIDE SCREEN WITH COPYING THE TERRAIN - 210 €
- HYDRAULIC HEIGHT ADJUSTMENT OF WORKING DEPTH - 520 €
- ROW OF SPRING TINES - 650 €
- FLEX ROLLER



[www.arkmet.com](http://www.arkmet.com)



ARKMET SP. Z O.O.  
ul. Ceglana 12  
77-132 Niezabyszewo  
POLSKA